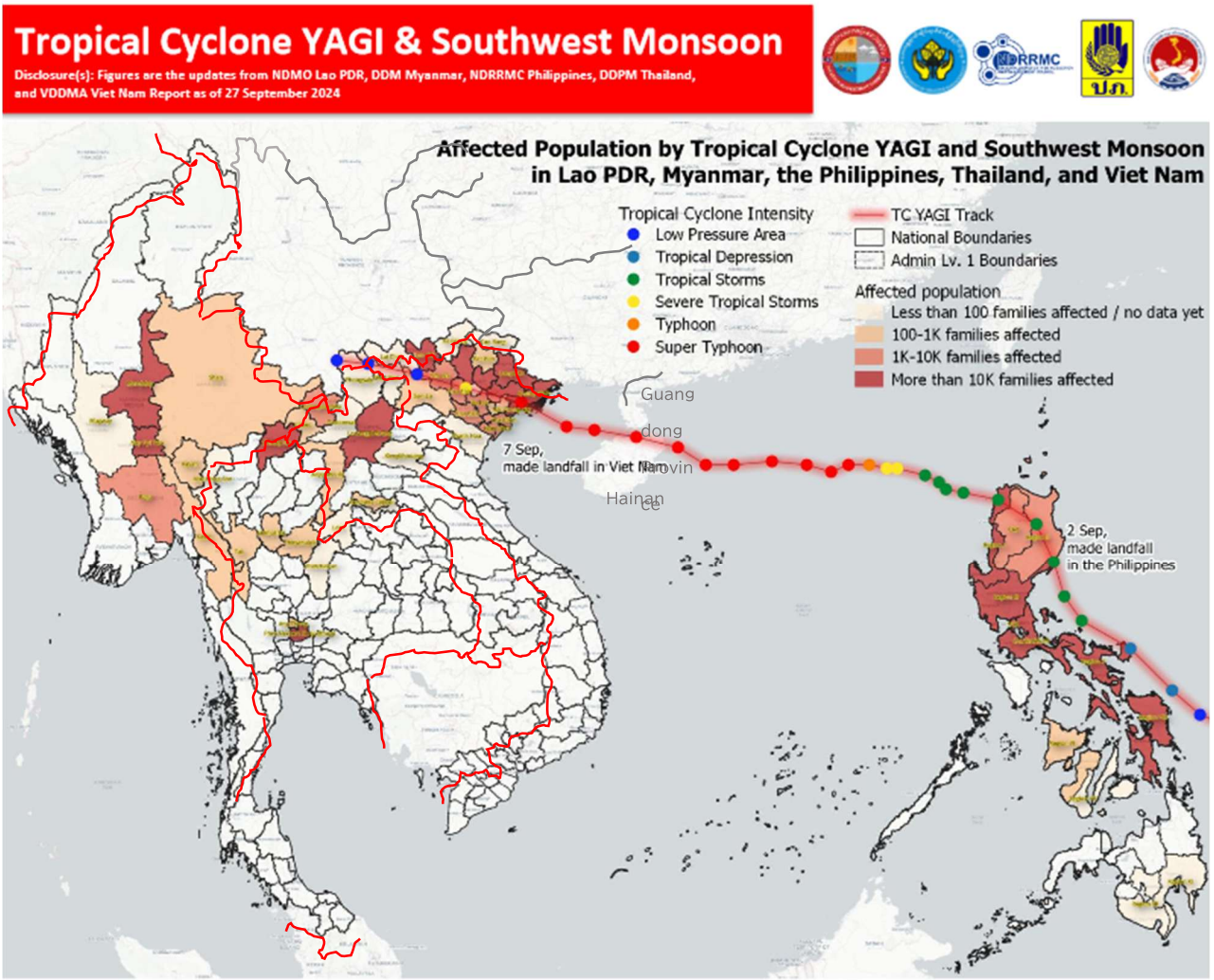


Philippines, China, Vietnam, Laos, Thailand, Myanmar Typhoon YAGI

Area	Philippines, China, Vietnam, Laos, Thailand, Myanmar	Death toll*	750 (PHL21, CHN 4, VNM344, LAO7, THA46, MMR328)
	Luzon Island, Philippines; northern Vietnam; Mekong River and its tributaries in northern Laos; northern Thailand; eastern Myanmar		
Period	September 5 - late September 2024		
Outline	After crossing over Luzon Island, YAGI developed into super-typhoon in South China Sea and made landfall in Hainan Island China, then in northern Vietnam. Even after being downgraded to a tropical depression, it brought heavy rainfall over a wide area from northern Vietnam to eastern Myanmar, causing major rivers, including international rivers, to overflow and large-scale landslides.	Missing*	112 (PHL26, MMR86)

*Numbers of victims are based on the report by AHA Center and local newspapers of September 27 and 29, 2024.



© AHA Centre (ASEAN Coordinating Centre for Humanitarian Assistance on disaster management)
 Source : <https://ahacentre.org/situation-update/situation-update-no-8-combined-effects-of-tropical-cyclone-yagi-and-southwest-monsoon-27-september-2024/>
 International boundary is added by IDI.

