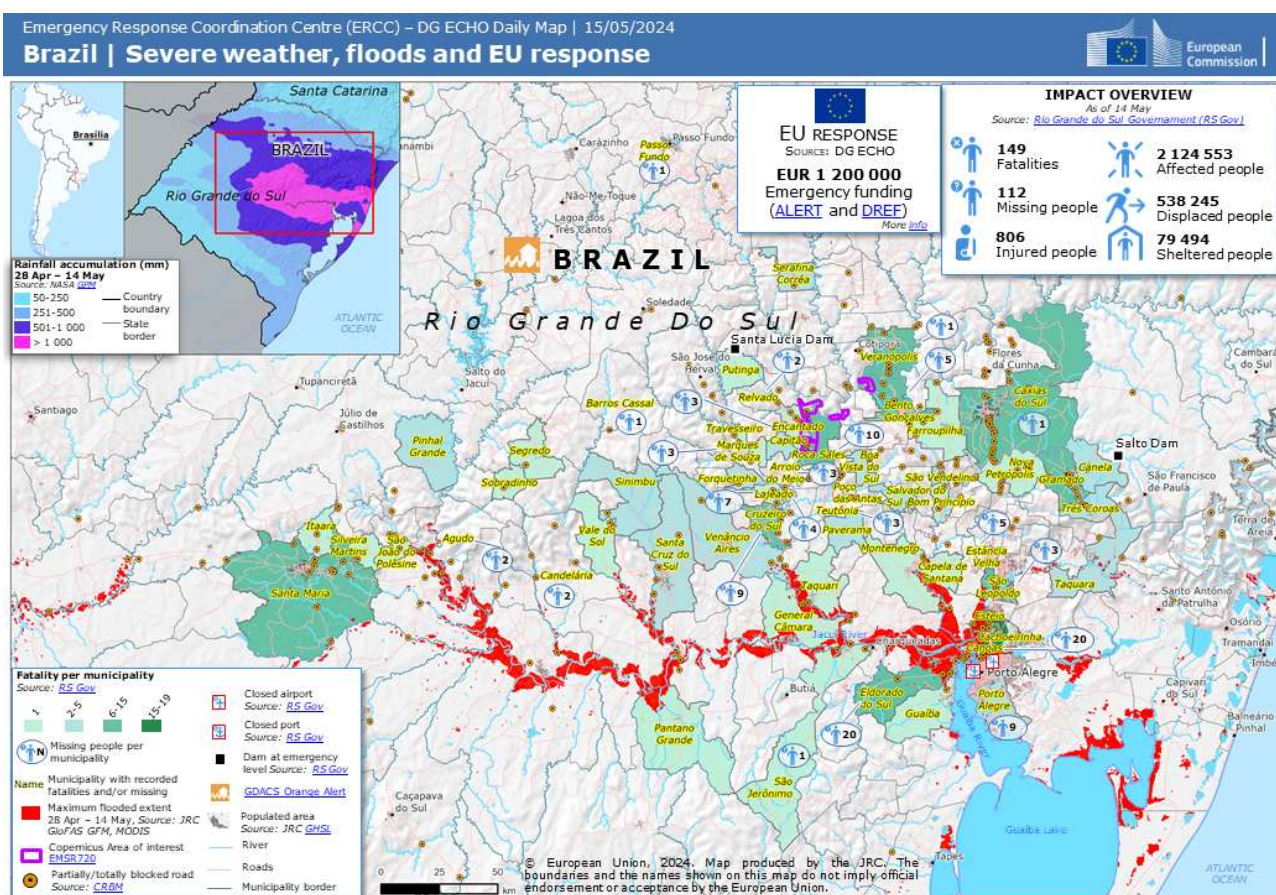


Brazil (Rio Grande do Sul State)

Floods and Landslides

Area	Brazil	Death toll**	183
	Rio Grande do Sul State		
Period	April 28 – Early June, 2024	Missing**	27
Outline	In Rio Grande do Sul state, heavy rainfall of over 300 mm (equivalent to two months' worth) occurred over a four-day period from April 29 to May 2, and then over 1,000 mm (equivalent to the annual average) in some places until mid-May, causing widespread flooding in the Jacuí River basin and other areas, with the city of Porto Alegre at the river's mouth remaining underwater for a month. Large-scale landslides occurred over a wide area in the Taquari Valley.		

※The number of victims is based on the report by federal university of Rio Grande do Sul of August 20, 2024



© European Union, 1995-2025

Source : <https://erccportal.jrc.ec.europa.eu/ECHO-Products/Maps#/maps/4868>

