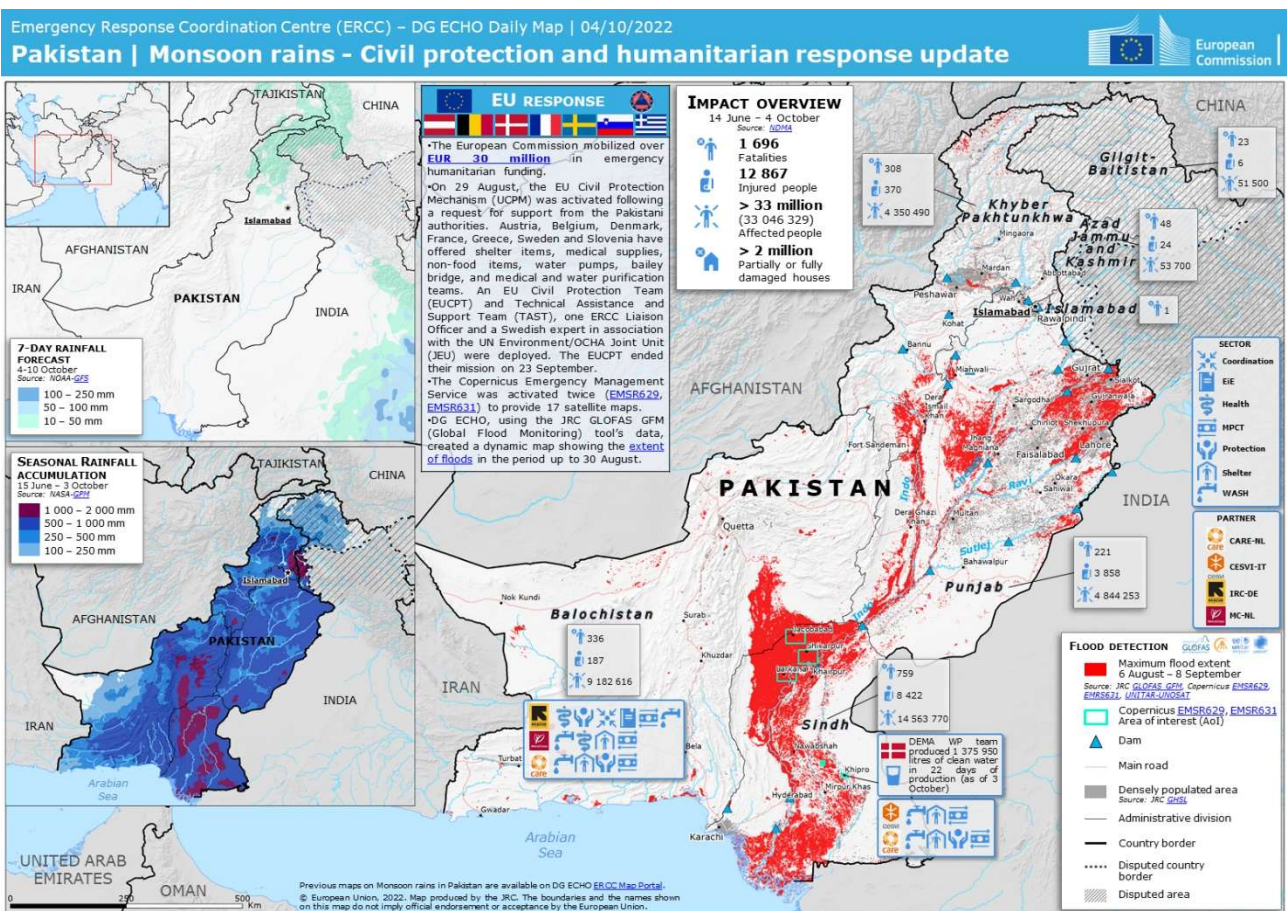


Pakistan MONSOON FLOODS

| | | | |
|----------------|--|--------------------|-------|
| Area | Islamic Republic of Pakistan Sindh Province, Balochistan Province, Punjab Province, Khyber Pakhtunkhwa Province | Death Toll* | 1,739 |
| Period | July – October 2022 | | |
| Outline | Vast areas along the Indus River and its tributaries were inundated due to the above average extreme rainfall since mid-June. Even after the end of the monsoon rainy season, part of the inundation continued until the following year. | Missing* | — |

*The figures of victims are based on the release by National Disaster Management Authority of November 18, 2022



© European Union, 1995-2023

Source :

[https://ercportal.jrc.ec.europa.eu/API/ERCC/Maps/DownloadMap?contentItemID=4237&fileN=4&forceDownload=false&moduleid=1860&tabid=516&__RequestVerificationToken=\[\[__RequestVerificationToken\]\]&ext=.png](https://ercportal.jrc.ec.europa.eu/API/ERCC/Maps/DownloadMap?contentItemID=4237&fileN=4&forceDownload=false&moduleid=1860&tabid=516&__RequestVerificationToken=[[__RequestVerificationToken]]&ext=.png)

