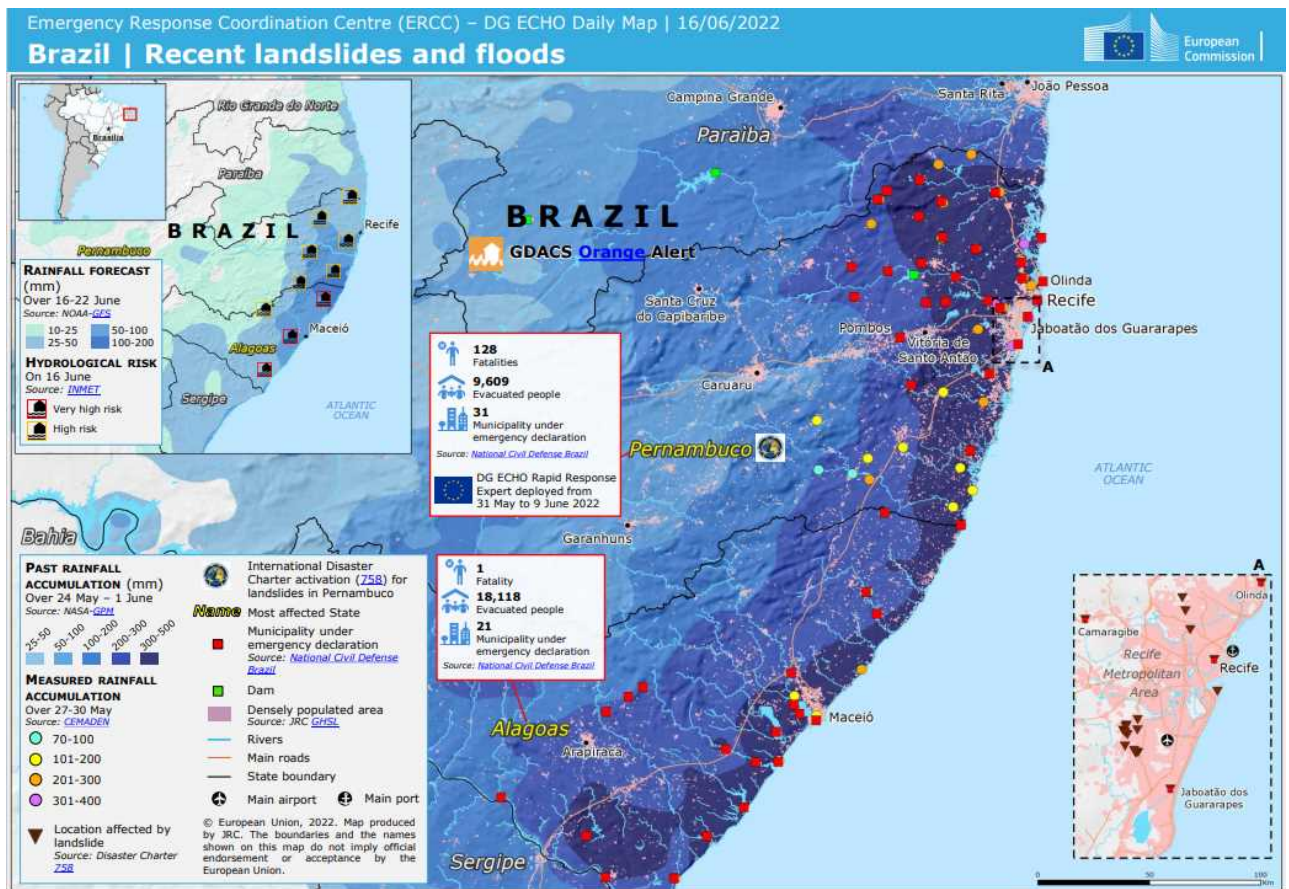


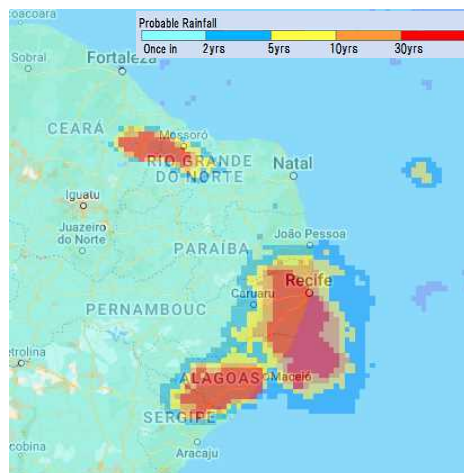
North-Eastern Brazil Floods and Landslides

Area	North-Eastern Brazil	Death Toll*	131
	Greater Recife Area, Pernambuco State Alagoas State, Paraíba State		
Period	Late May to early June, 2022	Missing*	—
Outline	In north-eastern Brazil, the continuous heavy rains caused floods and landslides to occur in succession. The heaviest affected area was densely-populated Greater Recife Area, where landslides brought many fatalities.		

※The figures of victims are based on the data from ECHO of Jun 27, 2022



出典：ECHO <https://reliefweb.int/map/brazil/brazil-recent-landslides-and-floods-dg-echo-daily-map-16062022>



The figure shows 30-year 72-hour rainfall around Recife

(72-hour probable rainfall, May 27 11:00AM, 2022)

GFASII

<http://gfas.internationalfloodnetwork.org/n-gfas-web/PC/frmMain.aspx>

