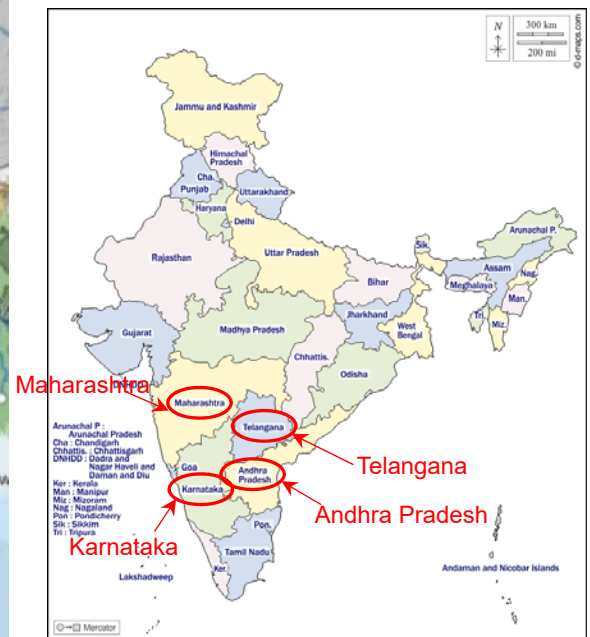


Southern India FLOODS

Areas	Southern India, especially along Krishna River Telangana, Karnataka, Maharashtra, Madhya Maharashtra, Andhra Pradesh	Death Toll	173
Period	October 13 to 28, 2020		
Outline	Musi and Bhima rivers were flooded by heavy rain at the end of longer-than-usual Monsoon. Hyderabad got the heaviest rains in 100 years.	Missing	5

Based on information from media and humanitarian / government organizations



d-maps
https://d-maps.com/carte.php?num_car=24869&lang=en

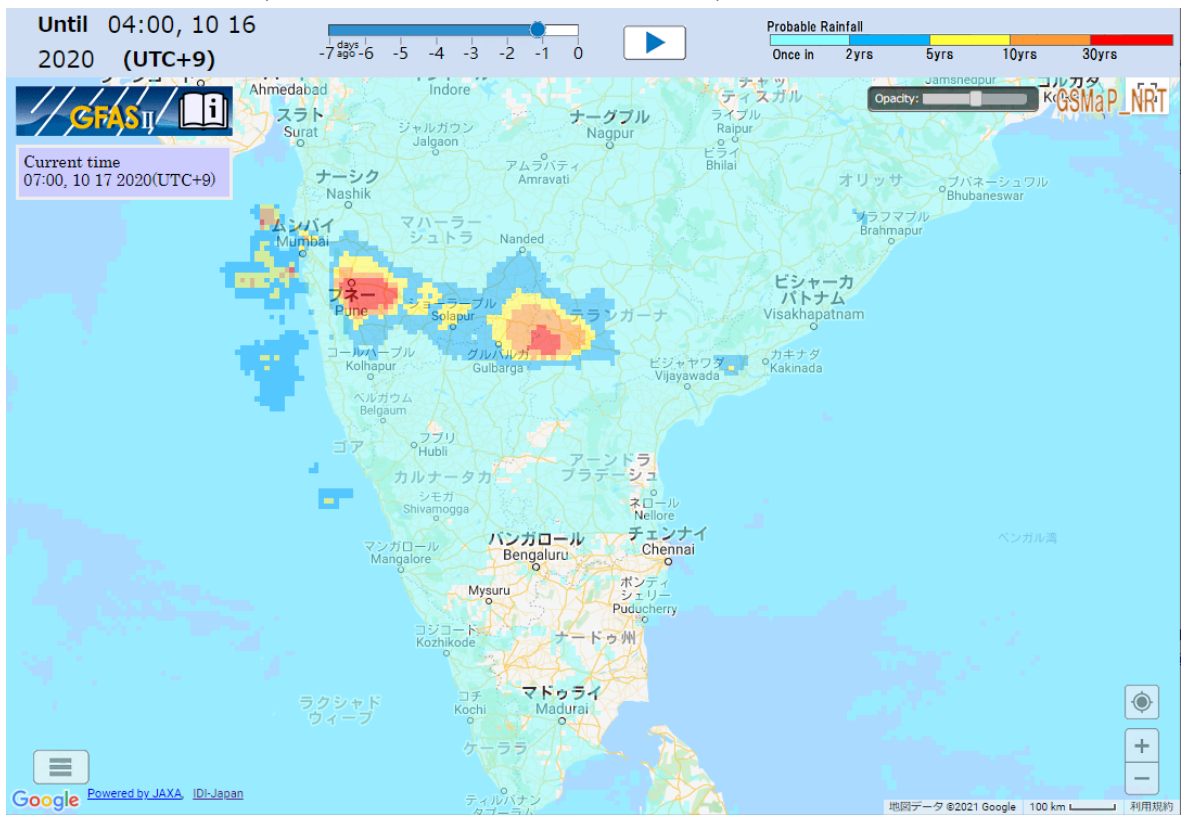
ezilon <https://www.ezilon.com/maps/asia/india-physical-maps.html>



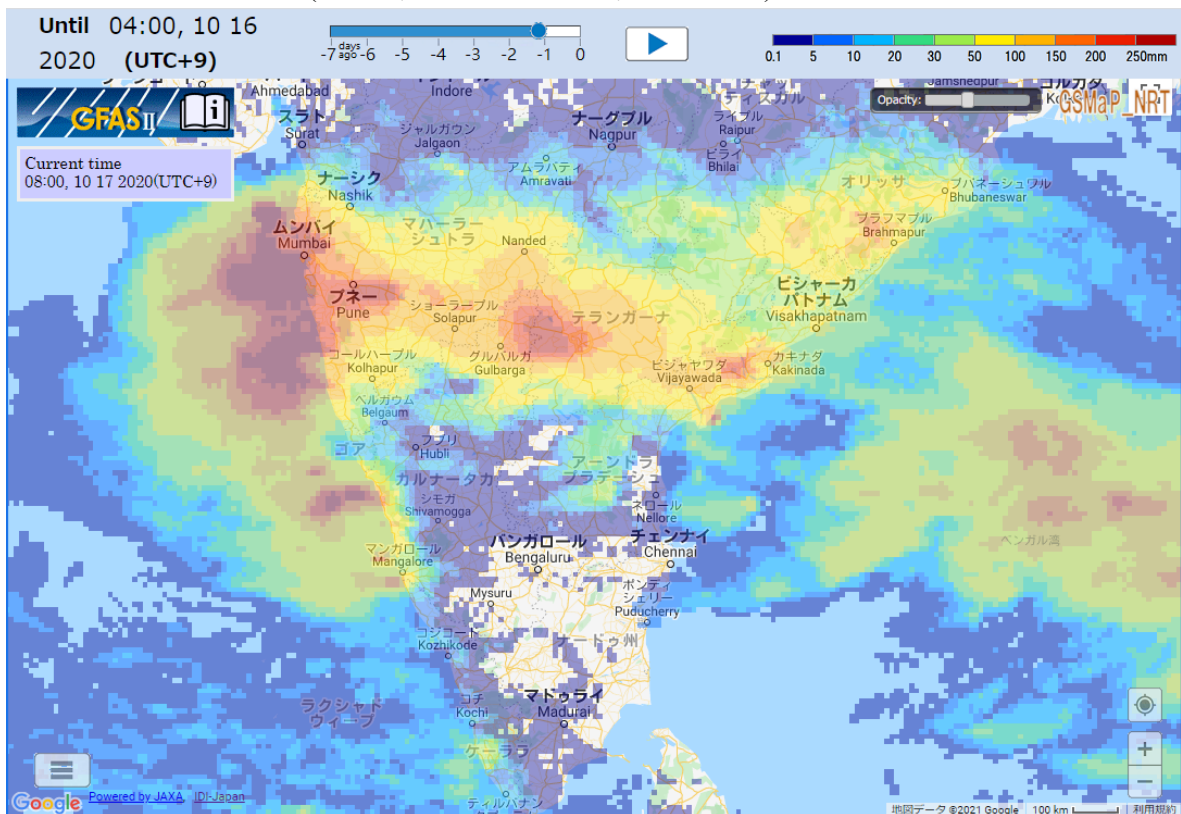
Precipitation Data by GFASII (Global Flood Alert System Ver.2.2)

GFASII is operated by Infrastructure Development Institute (IDI)-Japan
<http://gfas.internationalfloodnetwork.org/n-gfas-web/PC/frmMain.aspx>

72h Probable Rainfall (4:00am, Oct. 13 to 4:00am, Oct. 16 JST)



72h Accumulated Rainfall (4:00am, Oct. 13 to 4:00am, Oct. 16 JST)



一般社団法人 国際建設技術協会
 Infrastructure Development Institute - Japan