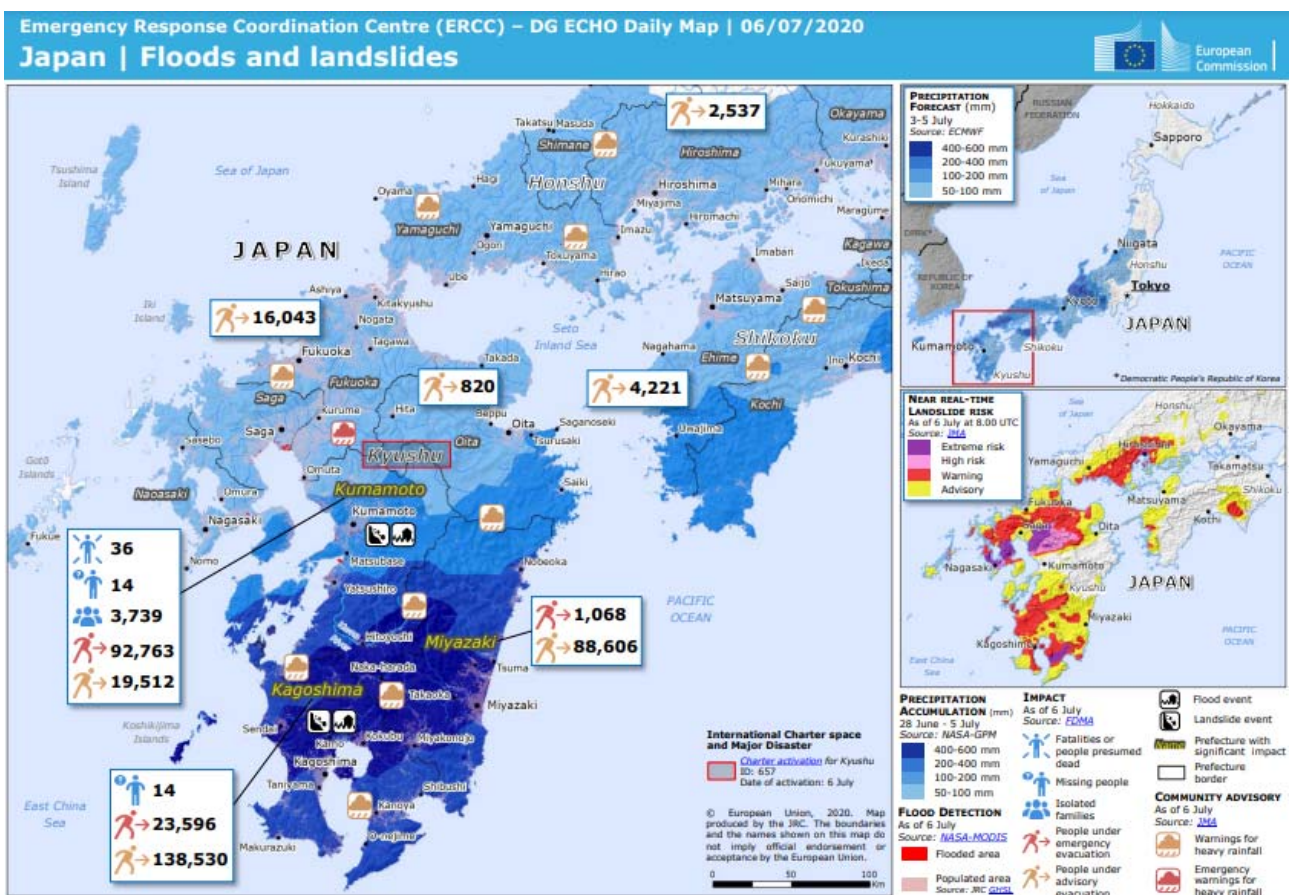


Japan FLOODS

Affected Areas	Japan	Death Toll	84
	Kyushu Region: Kumamoto, Kagoshima, Fukuoka, Saga, Nagasaki and Oita Others: Nagano, Shizuoka, Hiroshima Ehime, etc.		
Period	July 3 to 31, 2020	Missing	2
Outline	Seasonal rain front stayed stationary over vast areas from Kyushu to Central Japan. Record rainfall from linear rainband caused severe flooding especially along Kuma River in Kumamoto Prefecture..		

The above information is based on press release by media and government agencies

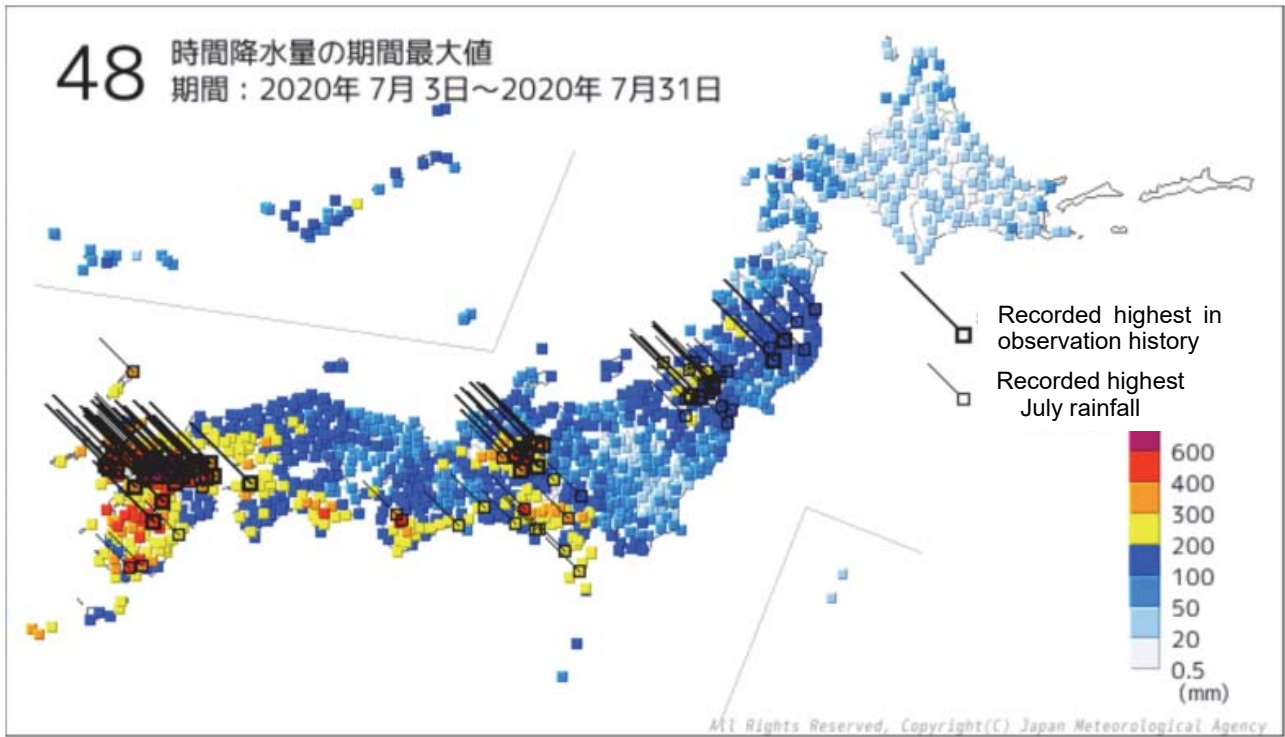


Source: EU/European Commission

https://reliefweb.int/sites/reliefweb.int/files/resources/ECDM_20200706_Japan_Floods.pdf



48-hour Maximum Rainfall during July 3 to 31, 2020



Source: Japan Meteorological Agency

http://www.nilim.go.jp/lab/bcg/siryou/tmn/tnn1151pdf/ks1151_06.pdf

