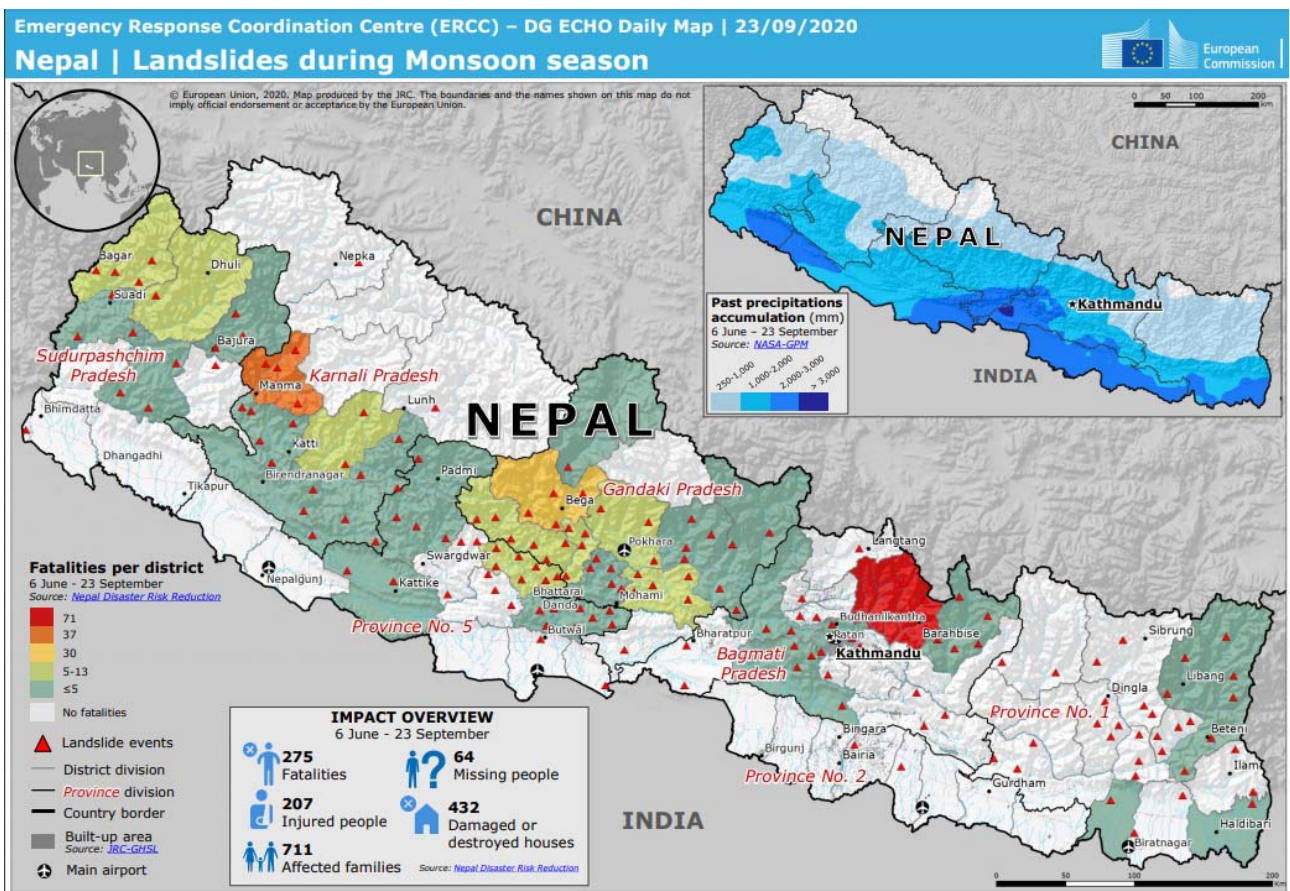


Nepal FLOODS and LANDSLIDES

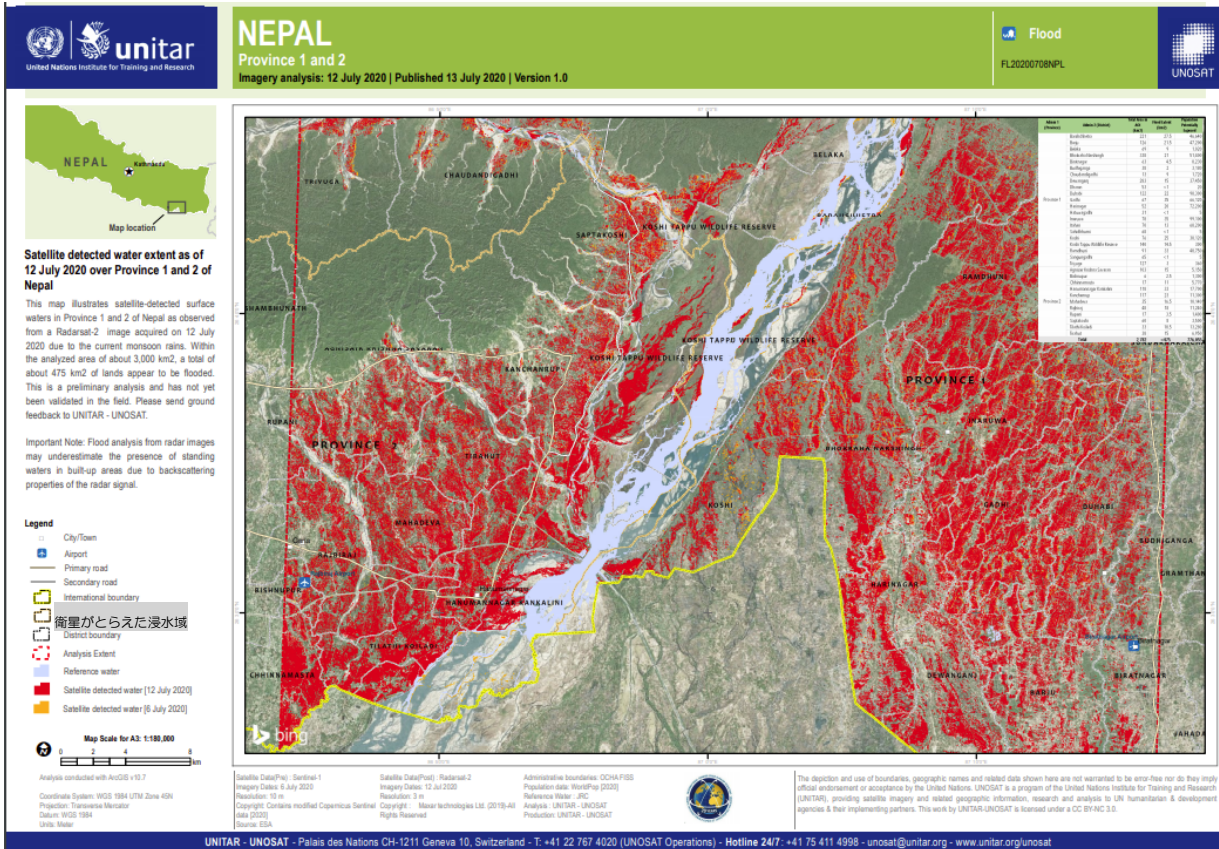
Affected Areas	Nepal Central: Lower areas of Himalaya and hills South: Karnali, Narayani, and Koshi river basins	Death Toll	348
Period	June to October, 2020	Missing	More than 100
Outline	Heavier-than-usual Monsoon rain triggered severe flooding and landslides. Authorities said it was the worst monsoon damage in 11 years.		

The above information is based on press release by media and government agencies

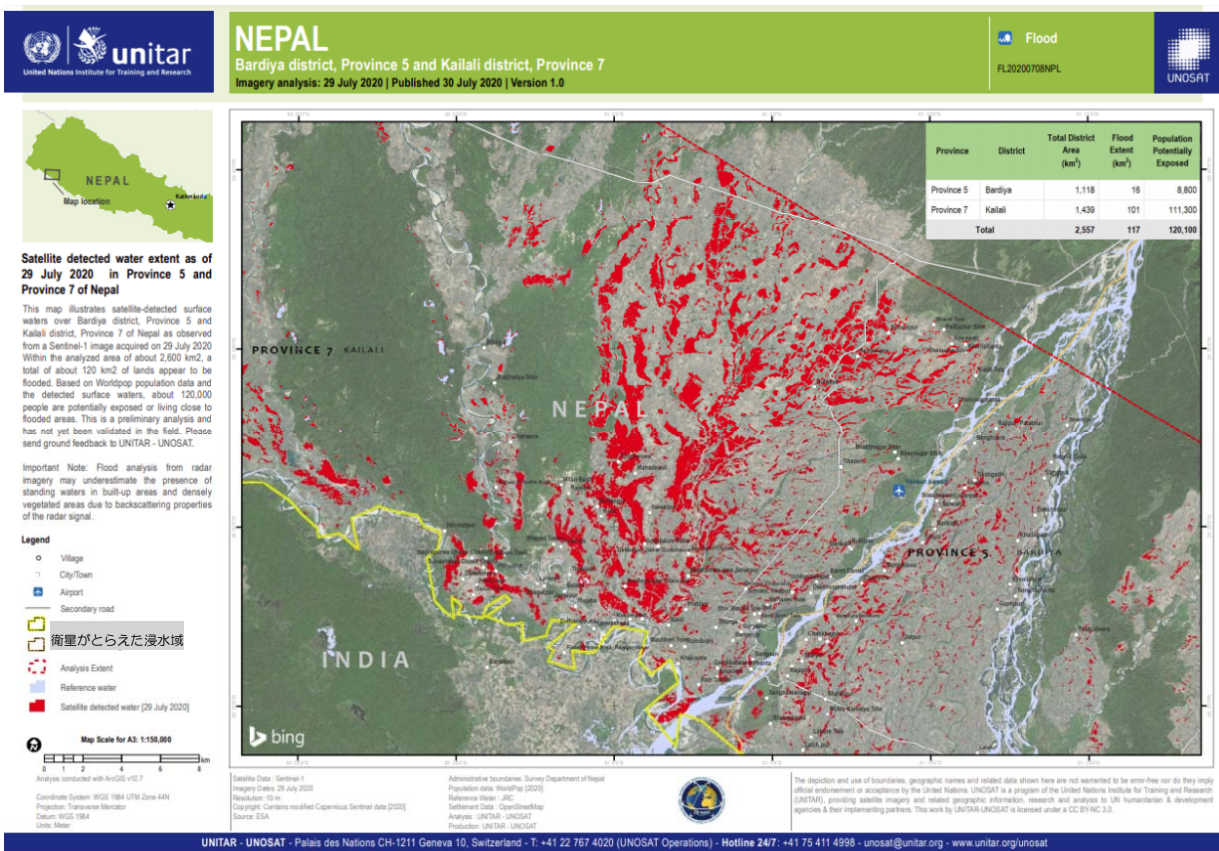


Source: https://reliefweb.int/sites/reliefweb.int/files/resources/ECDM_20200923_Nepal_landslides.pdf





Source: UNITAR
https://reliefweb.int/sites/reliefweb.int/files/resources/UNOSAT_A3_Natural_Landscape_FL20200708NPL_Province1_2_AOI3_20200712.pdf



Source: UNITAR
https://reliefweb.int/sites/reliefweb.int/files/resources/UNOSAT_A3_Natural_Landscape_FL20200708NPL_Bardiya_Kailali_20200729_0.pdf

