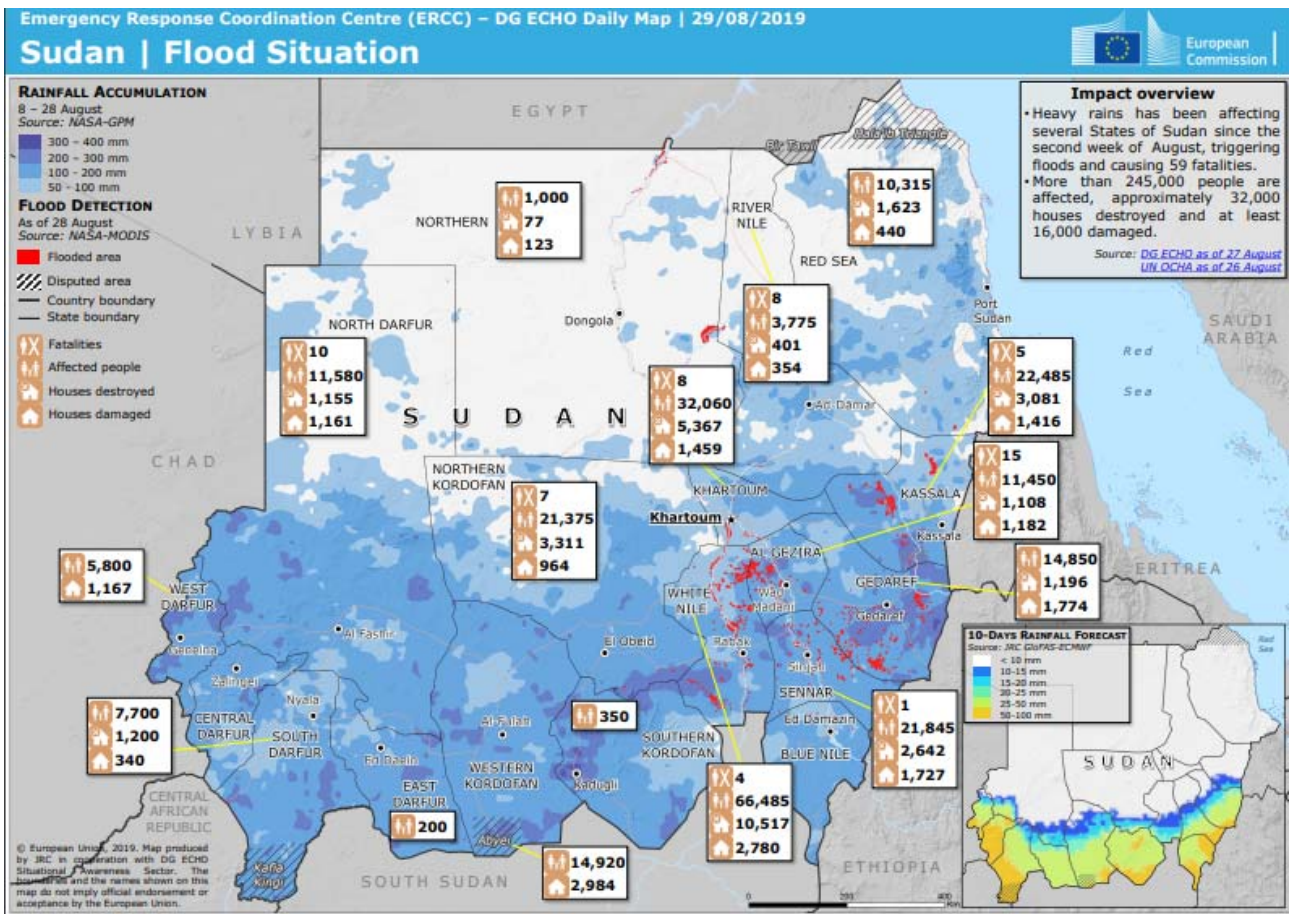


Sudan FLOODS

Affected Areas	Sudan White Nile, Khartoum, Kassala, etc.	Death Toll	78
Date of Occurrence	August 8, 2019	Missing	—
Outline	16 out of 18 provinces across Sudan suffered from flooding due to seasonal intermittent downpour. Hundreds of thousand people were forced to evacuate. Disconnected roads interrupted relief activities.		

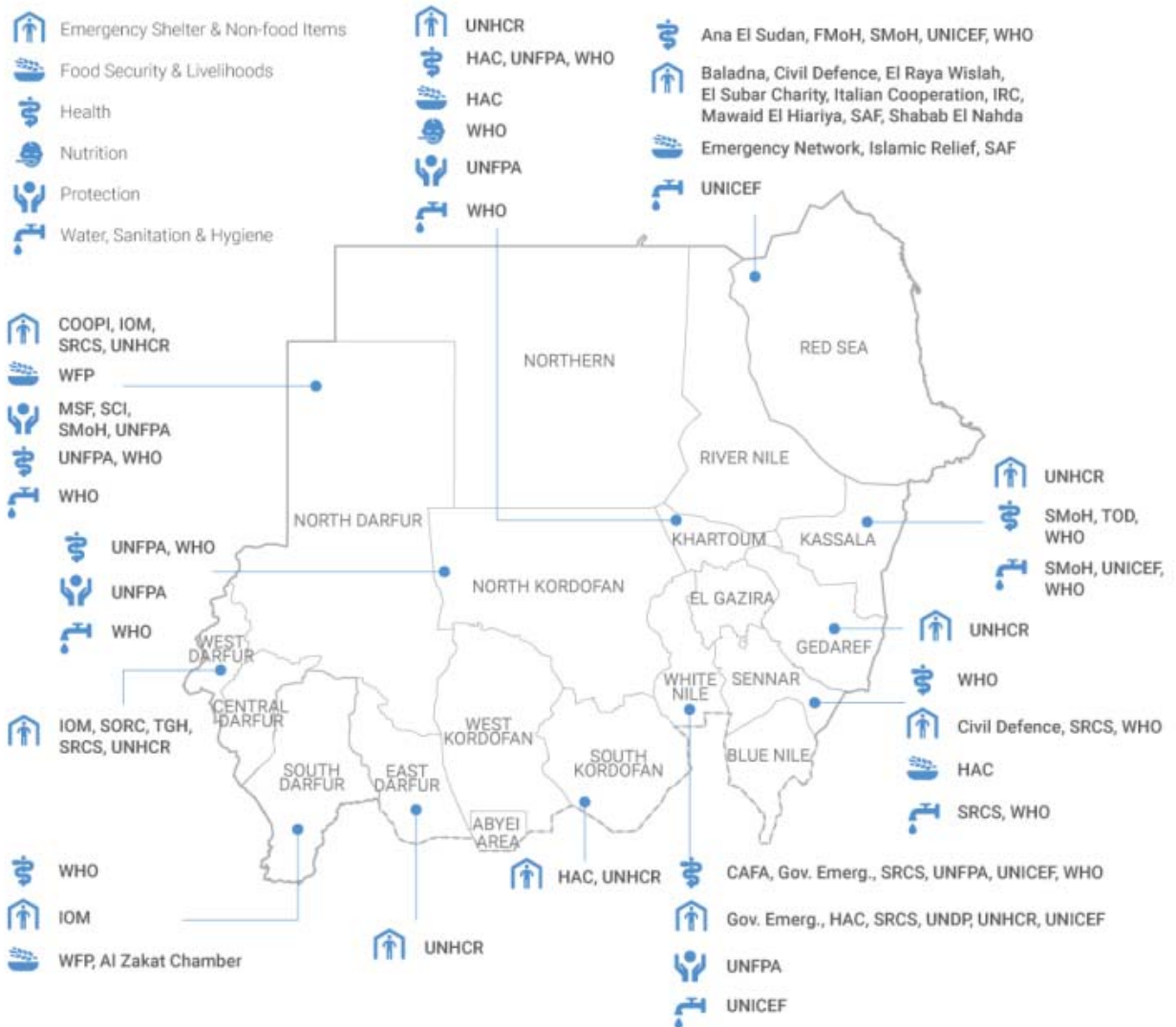
The above information is based on press release by media and government agencies.



Source: European Commission

<https://erccportal.jrc.ec.europa.eu/getdailymap/docId/3028>





Source: United Nations OCHA

<https://reliefweb.int/sites/reliefweb.int/files/resources/Situation%20Report%20-%20Sudan%20-%202019%20Sep%202019.pdf>



Satellite detected water extents, as of 27 Aug 2019 over White Nile State, Sudan

This map illustrates satellite-detected surface water in White Nile District, Sudan as observed from Radarsat-2 imagery acquired on 27 August 2019. Within the analysed area of about 3,000 km², a total 176 sq km of lands appear to be flooded as of 27 August 2019. This is a preliminary analysis and has not yet been validated in the field. Please send ground feedback to UNITAR - UNOSAT.

- Legend**
- City / Town
 - Populated Place
 - ✈ Airport
 - Railway
 - Road
 - State boundary
 - District boundary
 - Reference water
 - Analysis extent
 - Satellite detected water (27 August 2019)

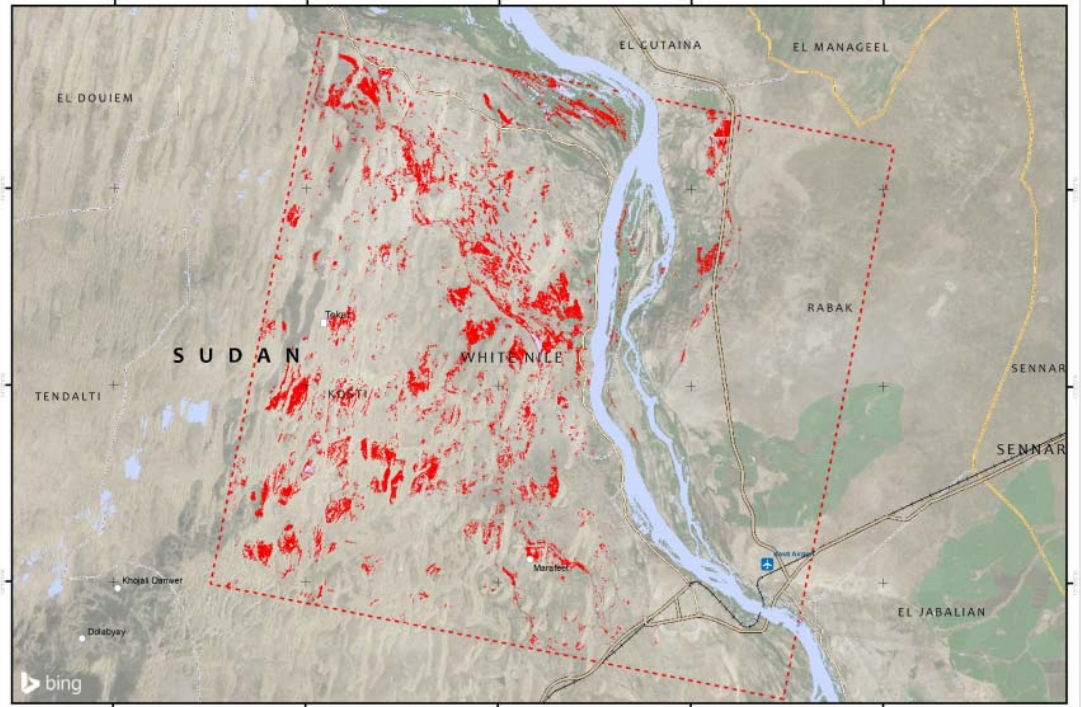
State	District	Flood Extent (sq km)	Total Population in AOI	Population Potentially Affected
White Nile	Rabak	10	142,950	340
	Kost	166	188,050	7980
Total		176	323,960	8,320



Map Scale for A2: 1:300,000

Analysis conducted with SNAP v6.0 and ArcGIS v10.7

Coordinate System: WGS 1984 UTM Zone 30N
 Projection: Transverse Mercator
 Datum: WGS 1984
 Units: Meter



Satellite Data: Radarsat-2
 Imagery Date: 27 August 2019
 Resolution: 8 m
 Copyright: © Maxar Technologies Ltd. (2019). All Rights Reserved.
 RADARSAT is an official mark of the Canadian Space Agency

Boundary data: UNOSAT/ROSE
 Population data: WorldPop (2013)
 Reference water: Global Surface Water, JRC
 Analysis: UNOSAT, UNOSAT
 Production: UNITAR - UNOSAT

The depiction and use of boundaries, geographic names and related data shown here are not warranted to be error-free nor do they imply official endorsement or acceptance by the United Nations. UNOSAT is a program of the United Nations Institute for Training and Research (UNITAR), providing satellite imagery and related geographic information, research and analysis to UN humanitarian & development agencies & their implementing partners. This work by UNITAR-UNOSAT is licensed under a CC BY-NC 2.0.

Source: United Nations unitar

<https://reliefweb.int/sites/reliefweb.int/files/resources/Sudanfloods.pdf>

