

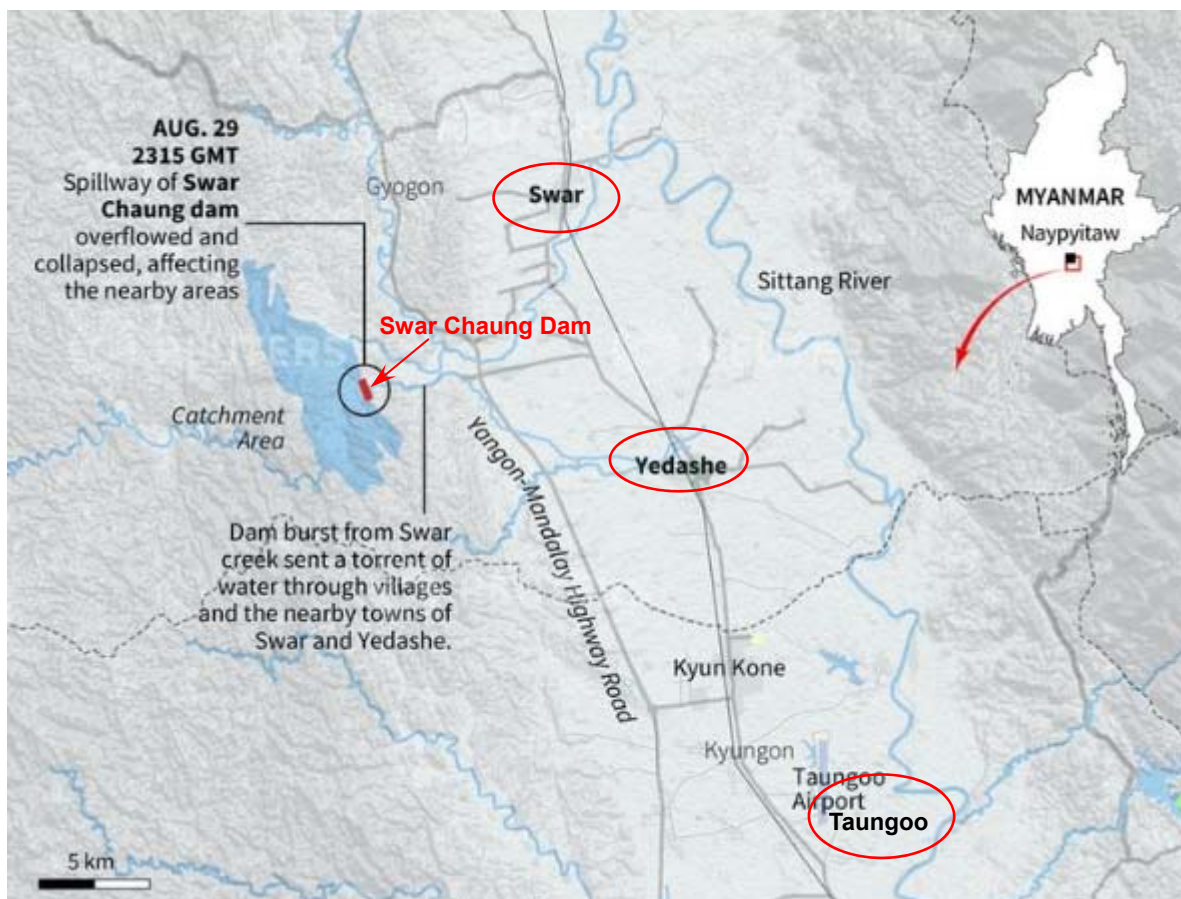
## Myanmar

## Swar Chaung Dam Spillway Collapse

|                    |   |            |   |
|--------------------|---|------------|---|
| Affected Areas     | Myanmar   | Death Toll | 4 |
|                    | Swar Chaung Dam is in Yedash Township, Taungoo District, Bago Region<br>Affected townships (all in Bago Region):<br>Yedashe (including Swar Town), Taungoo, Oktwin and Kyaut Kyi    |            |   |
| Date of Occurrence | August 29, 2018   | Missing    | 2 |
| Outline            | Heavy Monsoon rains caused the spillway collapse of Swar Chaung Dam, which submerged nearby villages. The Yangon-Mandalay Highway shut down disrupted traffic between major cities. |            |   |

Affected areas

Swar Chaung Dam is located about 60 km south of the capital Naypyitaw and about 280 km north of Yangon.

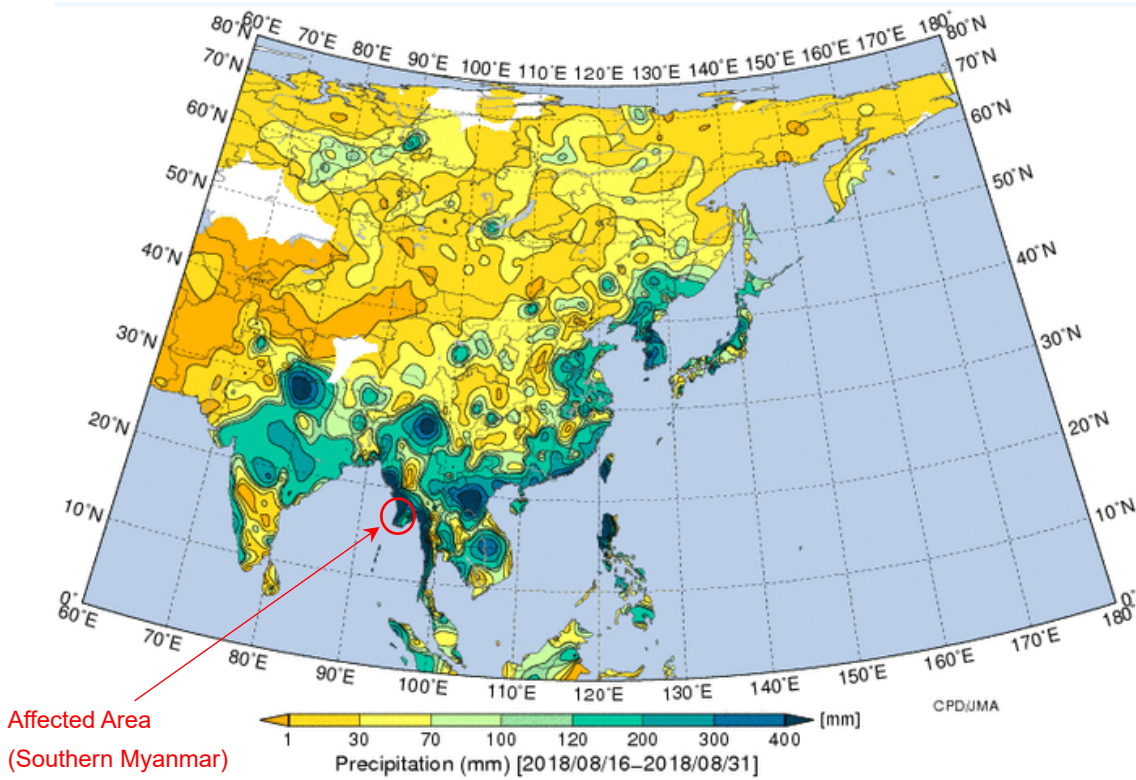


Source:

[https://reliefweb.int/sites/reliefweb.int/files/resources/20180910\\_acaps\\_start\\_briefing\\_note\\_floods\\_in\\_myanmar.pdf](https://reliefweb.int/sites/reliefweb.int/files/resources/20180910_acaps_start_briefing_note_floods_in_myanmar.pdf)



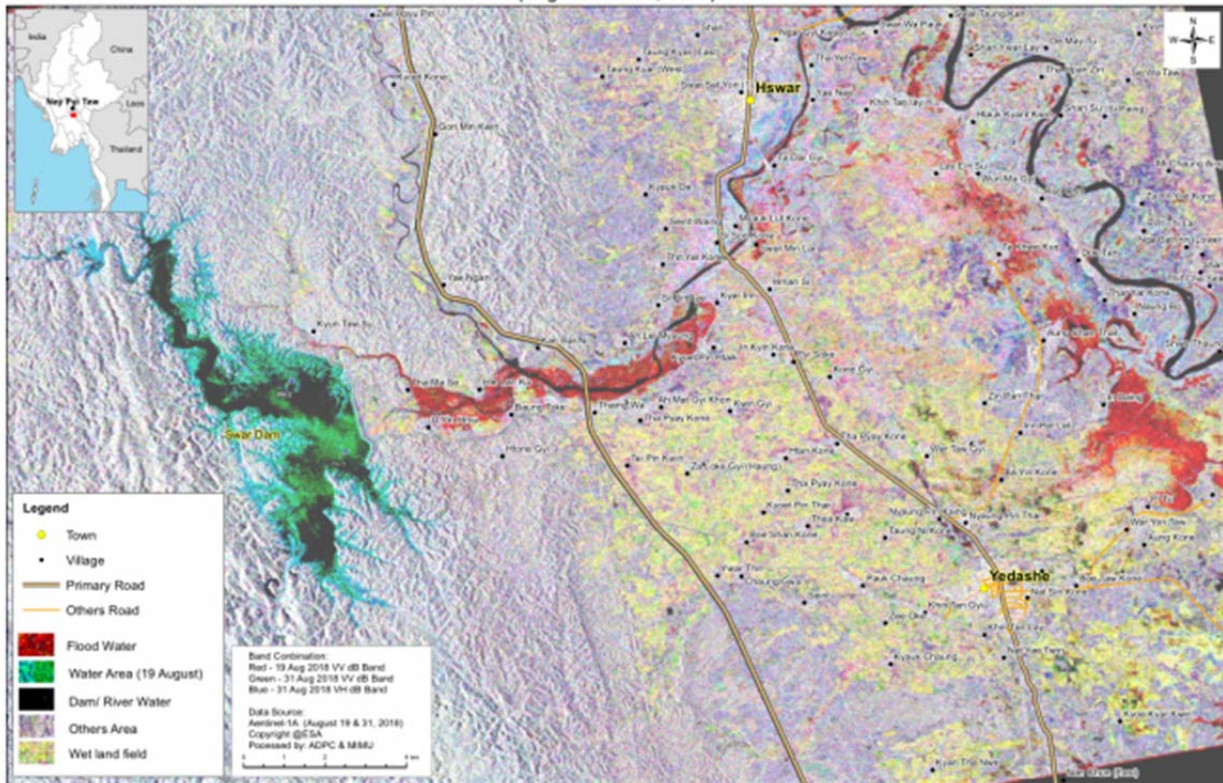
Total Rainfall from August 16 to 31 (Japan Meteorological Agency)



Source: <https://www.data.jma.go.jp/gmd/cpd/monitor/jun/rmap.php?elem=pt&term=hmonth>

Flood Situation as of August 31 (Asian Disaster Preparedness Center)

Change Detection of Hswar Chaung Dam Area  
(August 19 & 31, 2018)



Source: <https://reliefweb.int/map/myanmar/myanmar-change-detection-hswar-chaung-dam-area-august-19-31-2018-enmy>

