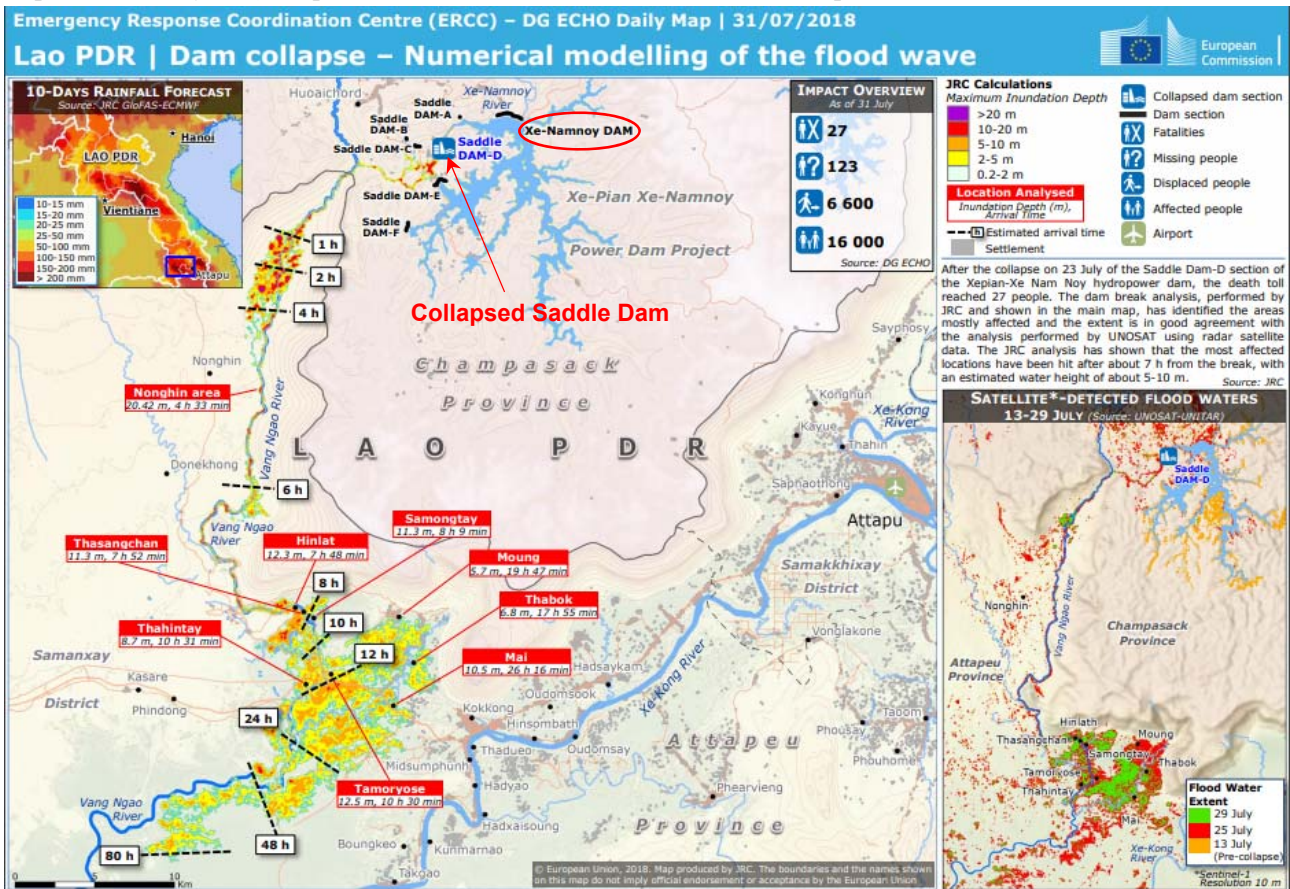


Lao PDR Saddle Dam Collapse (Xe Namnoy Hydropower Dam)

Affected Areas	Attapeu province, Laos Most Affected villages: Mai, Hinlath, Sanongtay, Thasangchan, Thahintai	Death Toll	40
Date of Occurrence	July 23, 2018		
Outline	A saddle dam of Xe Pian Xe Namnoy Hydropower Project site collapsed after days of heavy rain. Large amount of water swamped downstream villages. Concerns have been raised about substandard construction and dam management.	Missing	31

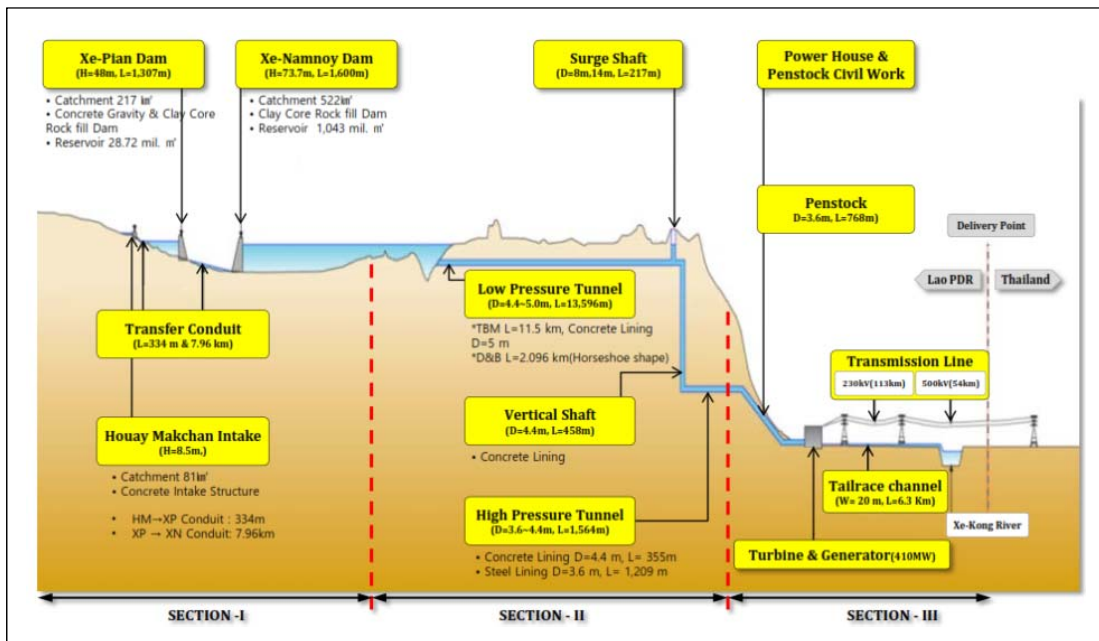
Impacts as of July 31 (European Civil Protection and Humanitarian Aid Operations: ECHO)



Source: <https://erccportal.jrc.ec.europa.eu/getdailymap/docId/2589>



Project Outline (Xe-Pian Xe-Namnoy Power Co.,LTD.)



Source: <http://www.pnpclaos.com/index.php/en/project/technical-information>

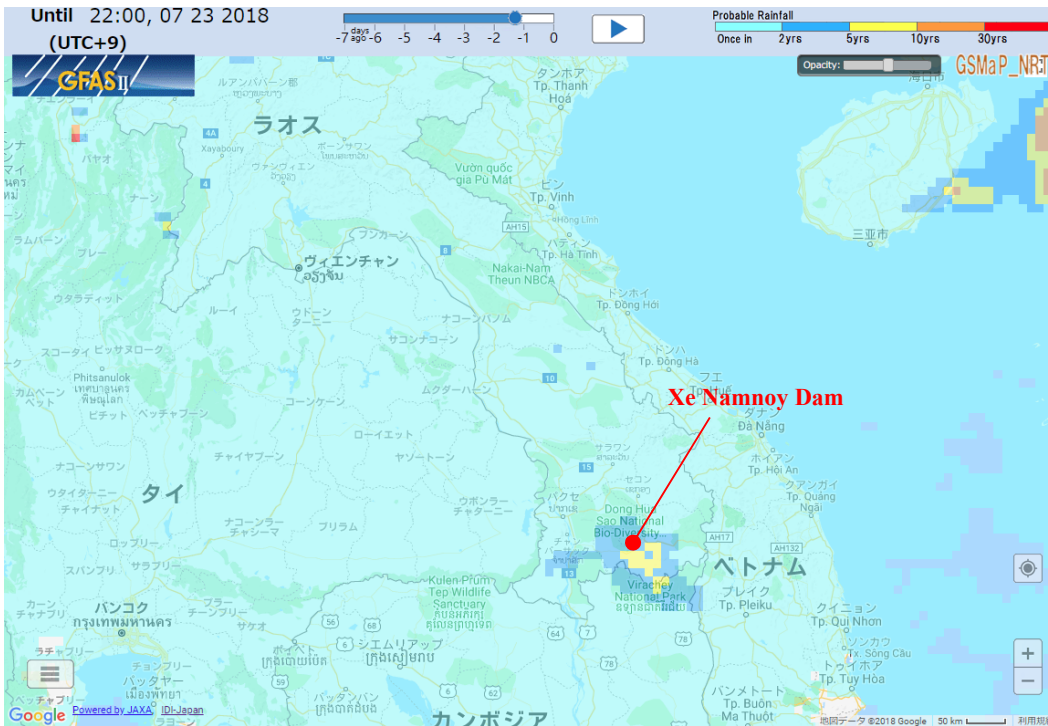


Precipitation Data from GFASII (Global Flood Alert System Ver.2)

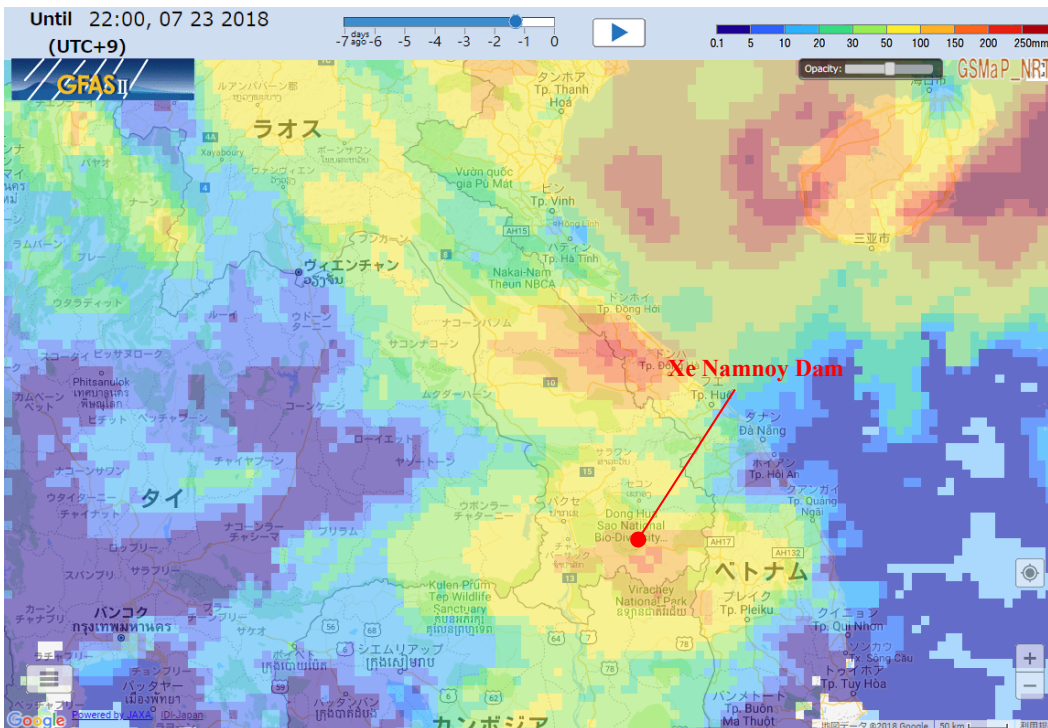
GFASII is operated by Infrastructure Development Institute-Japan (IDI-Japan)

<http://gfas.internationalfloodnetwork.org/n-gfas-web/PC/frmMain.aspx>

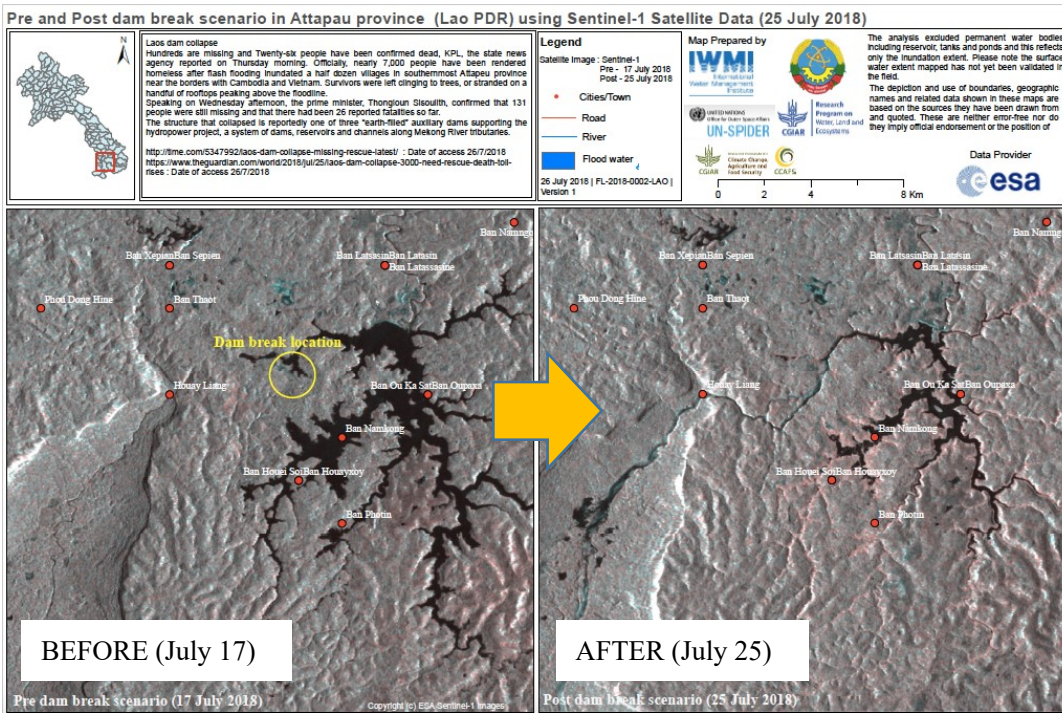
72 Hours Probable Rainfall (10:00pm, July 20 to 10:00pm, July 23 JST)



72 Hours Accumulated Rainfall (10:00pm, July 20 to 10:00pm, July 23 JST)

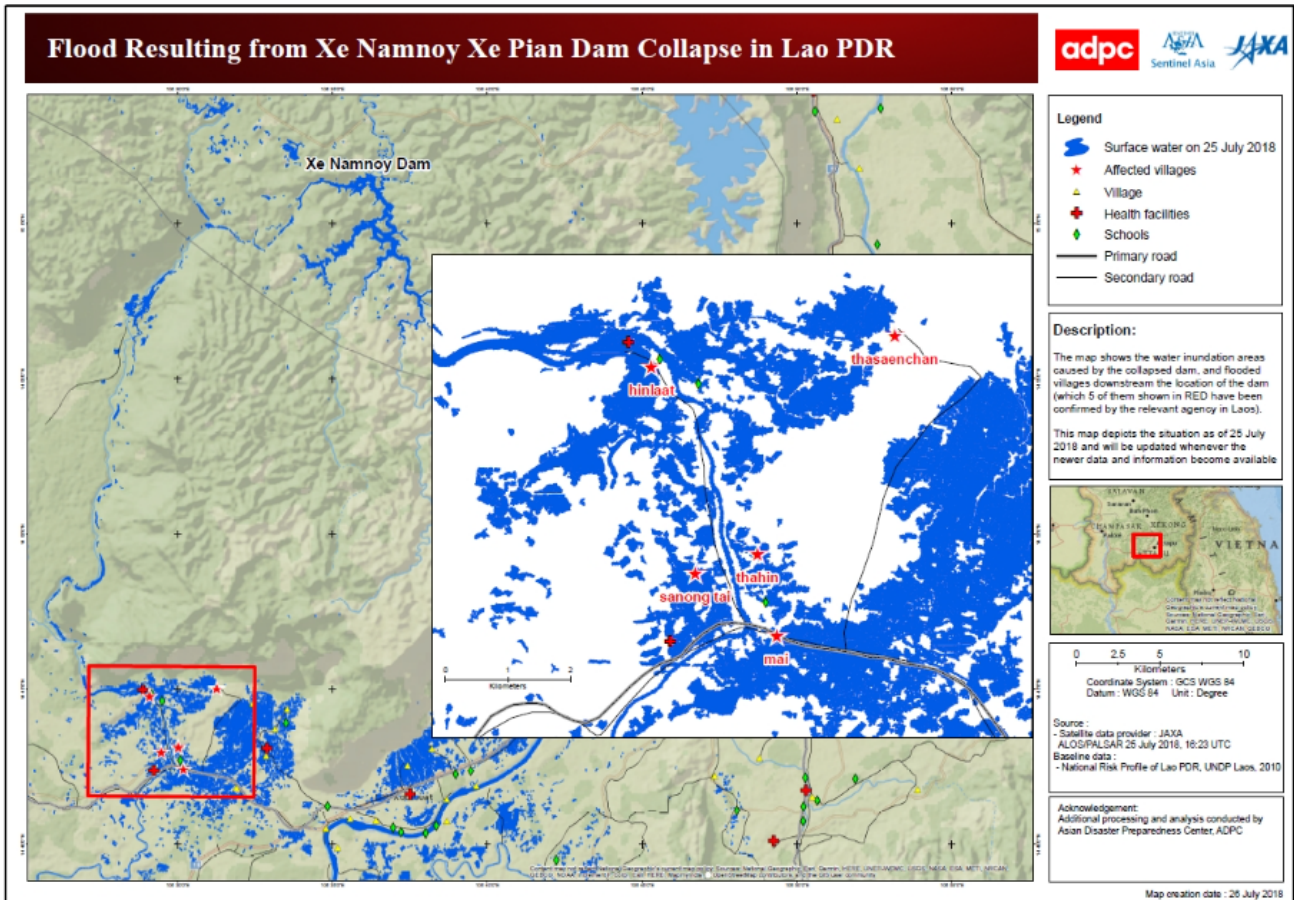


Before and After images around Xe Namnoy Dam (International Water Management Insititute: IWMI)



Source: <http://www.satnavi.jaxa.jp/project/alos2/news/2018/180727.html>

Submerged areas as of July 25 (International Charter)



Source: https://disasterscharter.org/image/journal/article.jpg?img_id=934665&t=1532691595767

