

# Kenya FLOODS

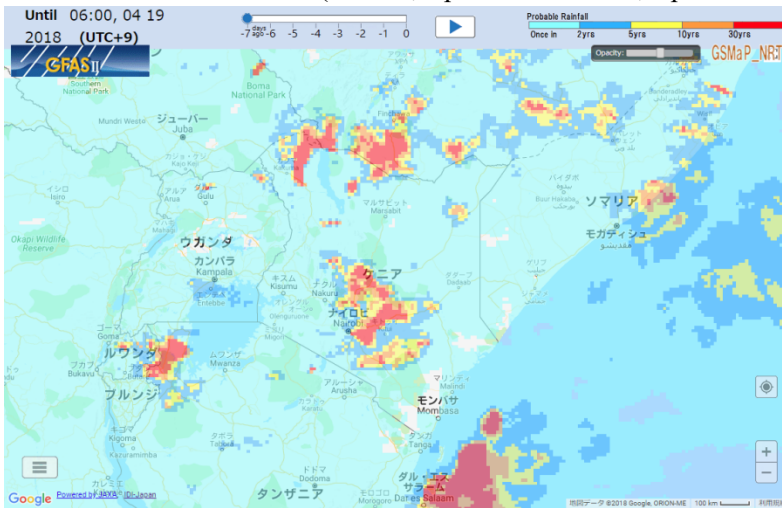
Affected Areas	Kenya Most Affected Counties: Nairobi, Taita Taveta, Tharaka-Nithi, Kitui, Isiolo, Narok, Makueni, Tana River, Kisumu, Samburu, Turkana and Garissa	Death toll	186 (March to June)
Date of Occurrence	March 1, 2018	Missing	no data
Outline	Heavy rainfall during Long Rainy Season caused series of flooding. Water levels of rivers and reservoirs increased. An irrigation pond in Nakuru County broke its banks.		

## Precipitation Data from GFASII (Global Flood Alert System Ver.2)

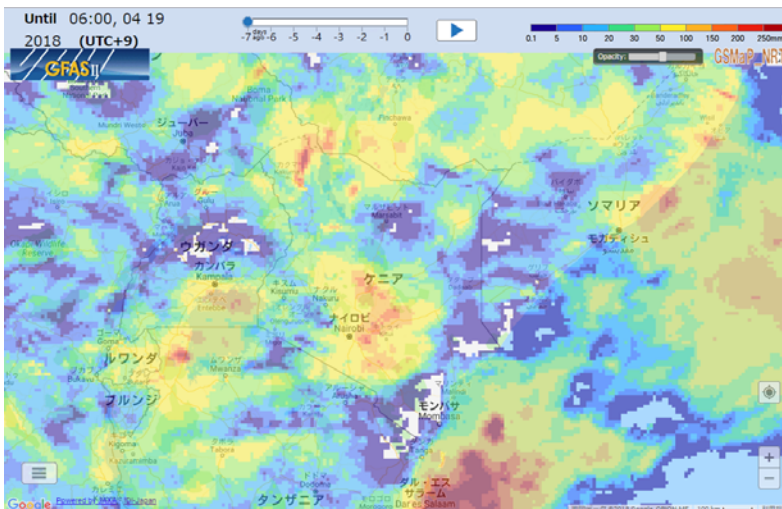
GFASII is operated by Infrastructure Development Institute-Japan (IDI-Japan)

<http://gfas.internationalfloodnetwork.org/n-gfas-web/PC/frmMain.aspx>

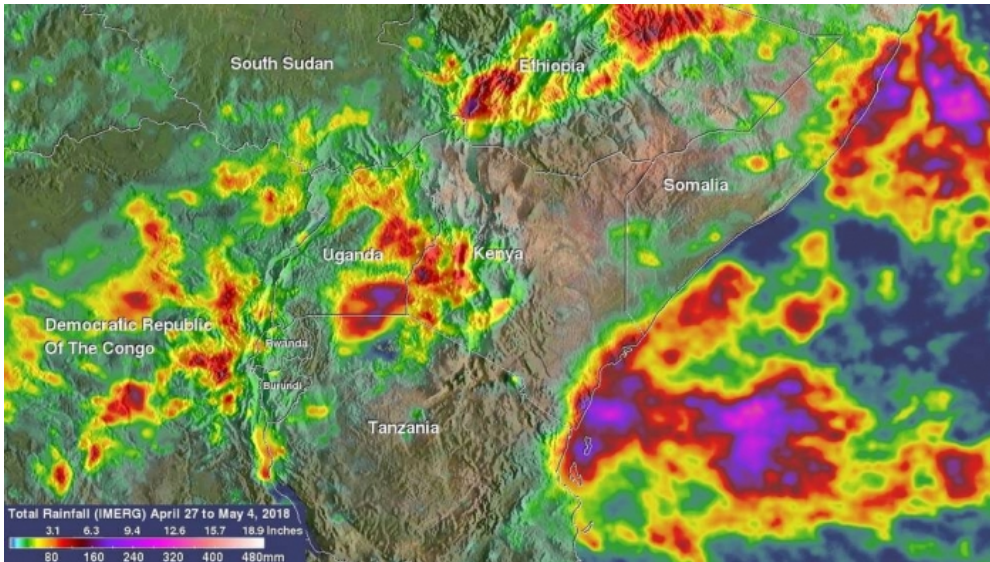
### 72 Hours Probable Rainfall (6:00am, April 16 to 6:00am, April 19 JST)



### 72 Hours Accumulated Rainfall (6:00am, April 16 to 6:00am, April 19 JST)



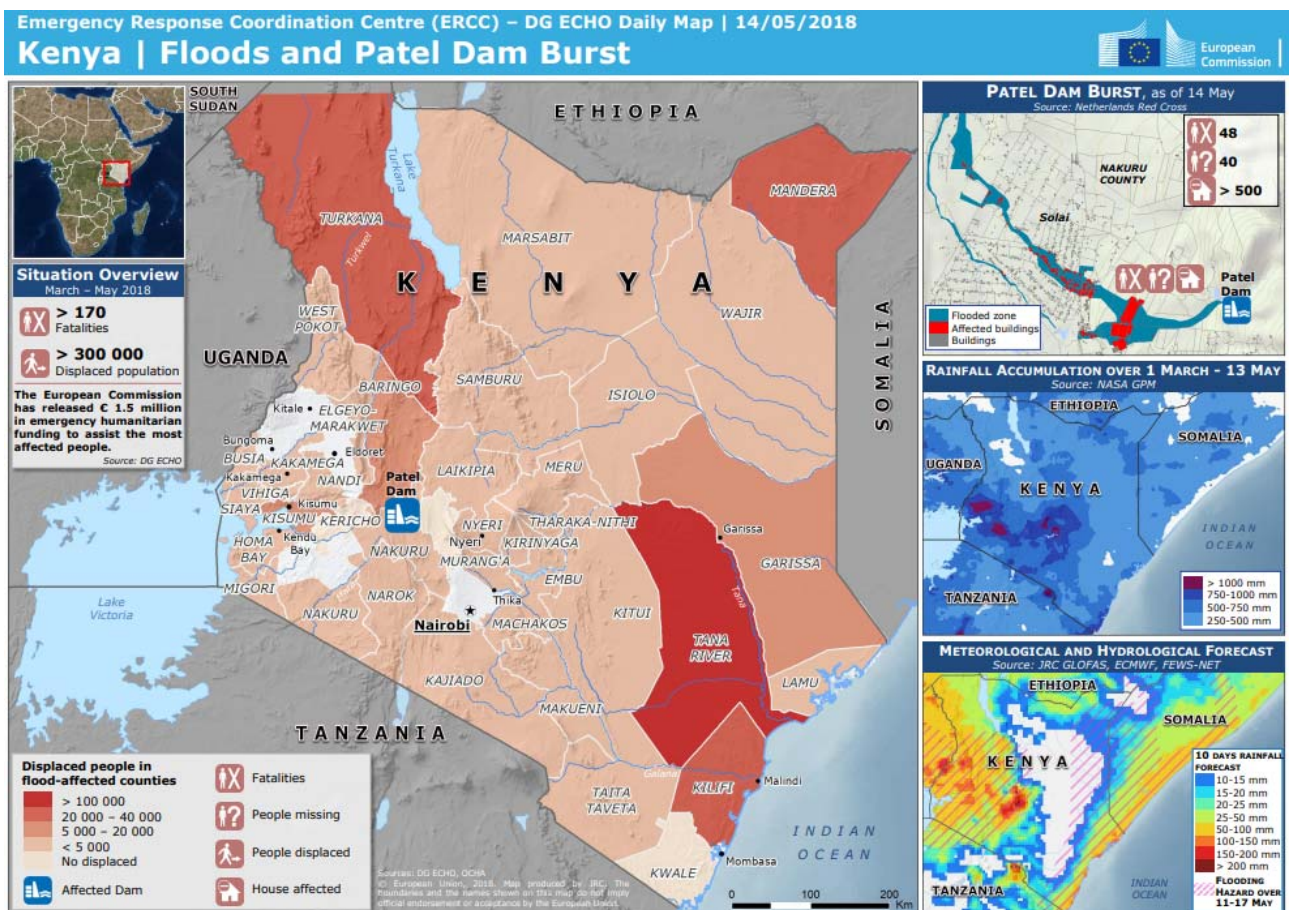
Estimated Total Rainfall (April 27 to May 4) (NASA)



Credits: NASA/JAXA

Source: <https://www.nasa.gov/feature/goddard/2018/nasa-imerg-shows-devastating-rainfall-over-east-africa>

Flood Situation as of May 14 (European Civil Protection and Humanitarian Aid Operations: ECHO)



Source: <https://reliefweb.int/map/kenya/kenya-floods-and-patel-dam-burst-dg-echo-daily-map-14052018>

