

Sri Lanka, India, Bangladesh: Cyclone ROANU

Countries and Districts	Sri Lanka, India, Bangladesh	Death	Sri Lanka : 105 India : 13 Bangladesh : 26
	Sri Lanka: Kegalle, Anuradhapura, Kand, Gampaha, Ratnapura, Kalutara, etc. India: Tamil Nadu, Andhra Pradesh, Odisha, etc. Bangladesh: Chittagong, Barisal, etc.		
Date of Occurrence	May 14, 2016	Missing	Sri Lanka : 116 India : no data Bangladesh: no data
Outline	After causing devastating flooding and landslides in Sri Lanka, Tropical Cyclone ROANU moved up the eastern coast of India and slammed into Bangladesh.		

Photos

<Sri Lanka>



Landslides in Aranayake, Kegalle
Sri Lanka
May 18, 2016
(Sri Lanka Red Cross)

Source: <https://twitter.com/SLRedCross>

<Bangladesh>



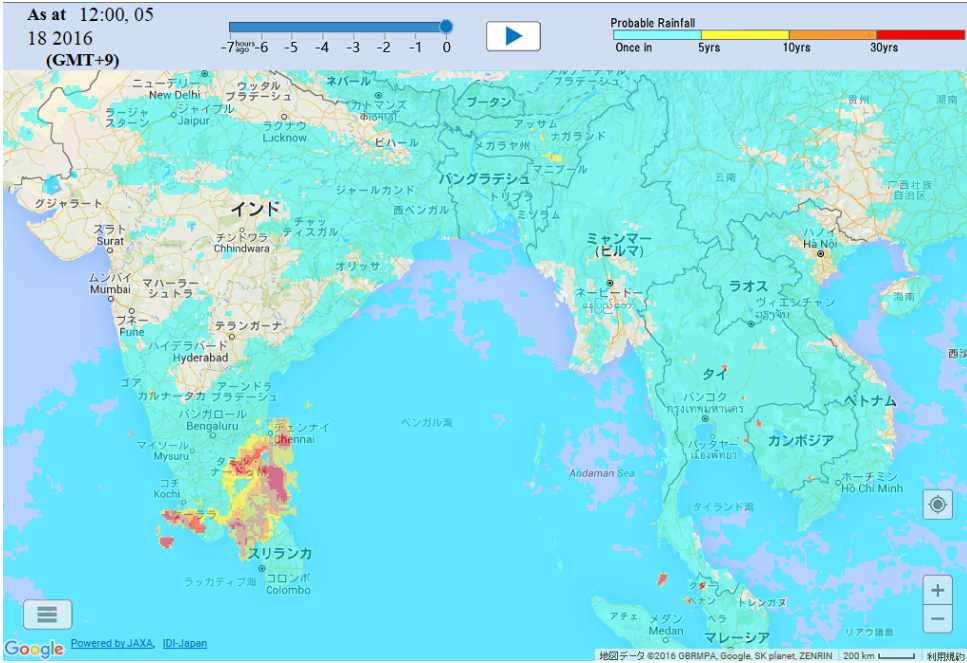
Just before the landfall
Chittagong,
Bangladesh
May 21, 2016
(International Federation of Red Crescent)

Source: <https://twitter.com/IFRCAsiaPacific>

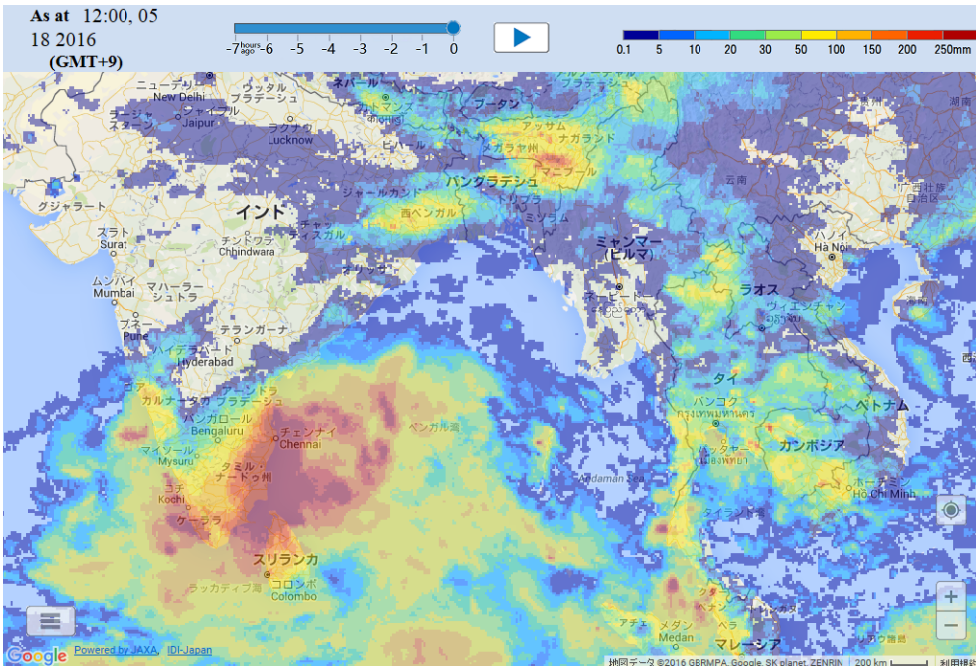
Precipitation Data acquired by satellite data analysis using **GFASII (Global Flood Alart System Ver.2)**
(GFASII is provided by Infrastructure Development Institute- Japan)

<Sri Lanka>

72 Hours Probable Rainfall (12:00pm, May 15 – 12:00pm, May 18 JST (Japan Standard Time))

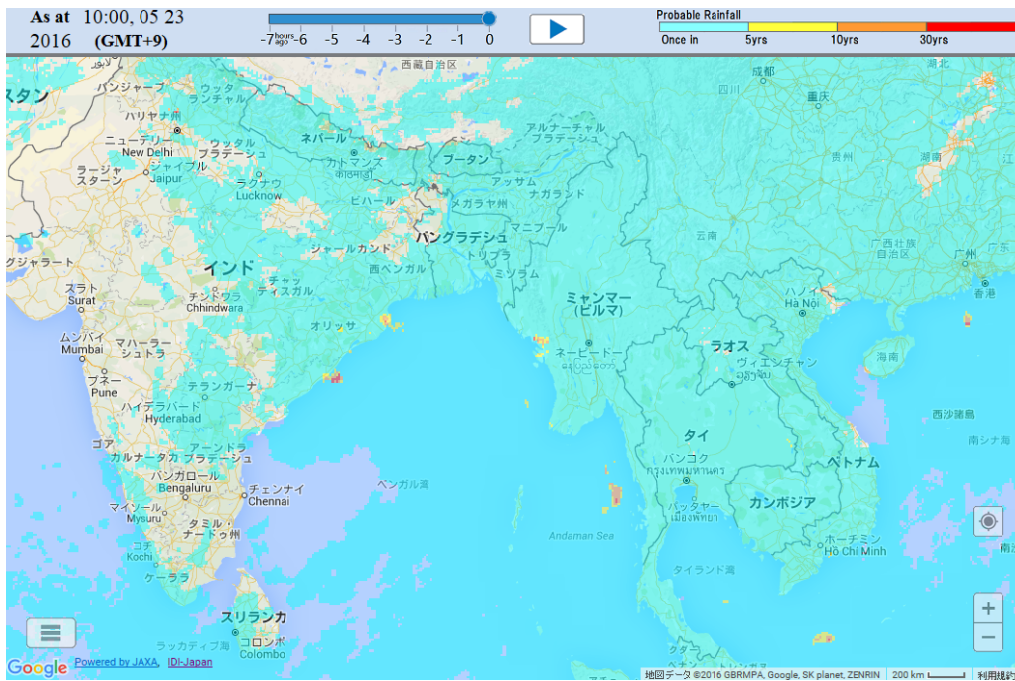


72 Hours Accumulated Rainfall (12:00pm, May 15 – 12:00pm, May 18 JST (Japan Standard Time))

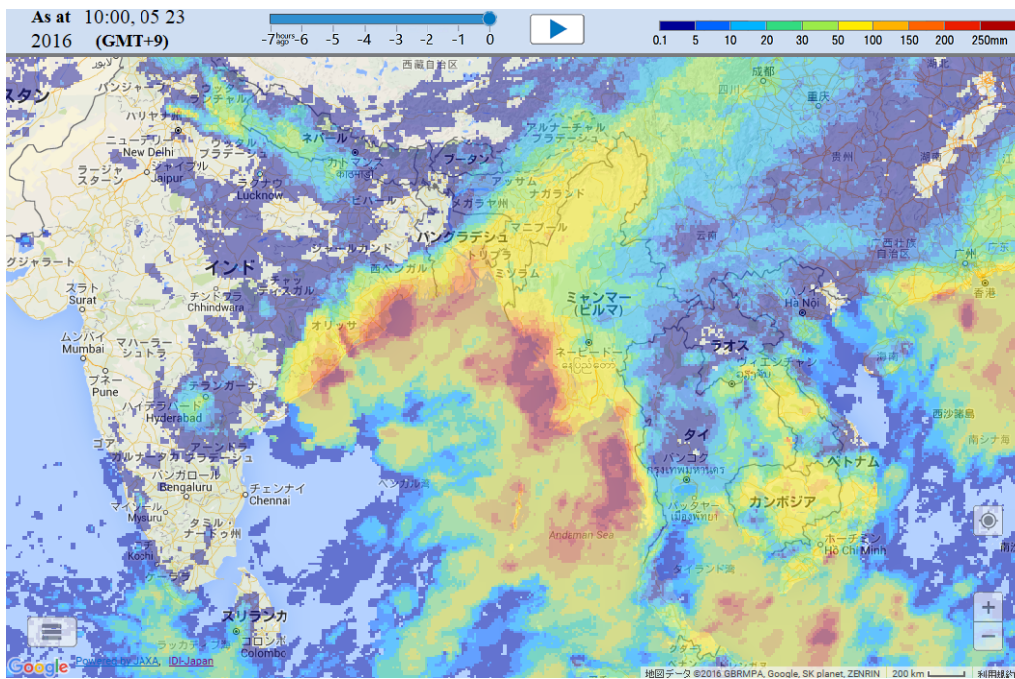


<Bangladesh>

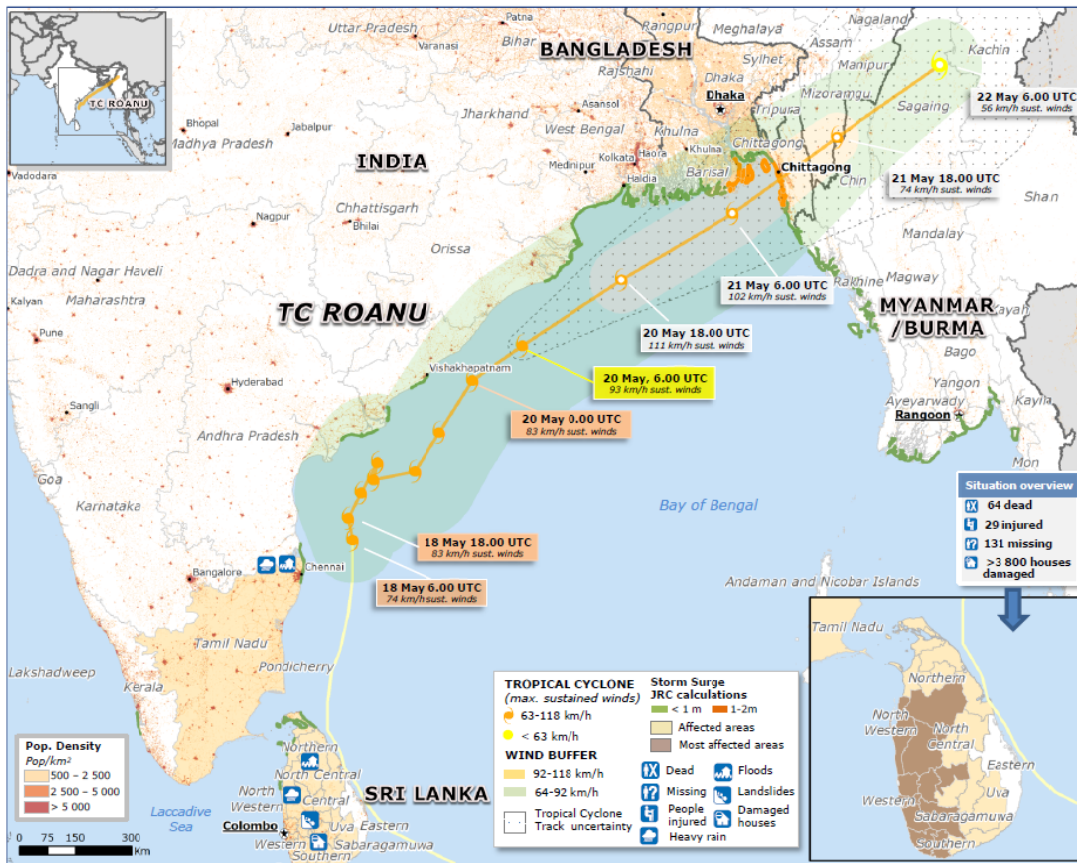
72 Hours Probable Rainfall (10:00am, May 20 – 10:00am, May 23 JST (Japan Standard Time))



72 Hours Accumulated Rainfall (10:00am, May 20 – 10:00am, May 23 JST (Japan Standard Time))



ROANU Tracking as of May 20 by ECHO



Source: <http://reliefweb.int/map/india/india-bangladesh-myanmarburma-tropical-cyclone-roanu-echo-daily-map-20052016-0>

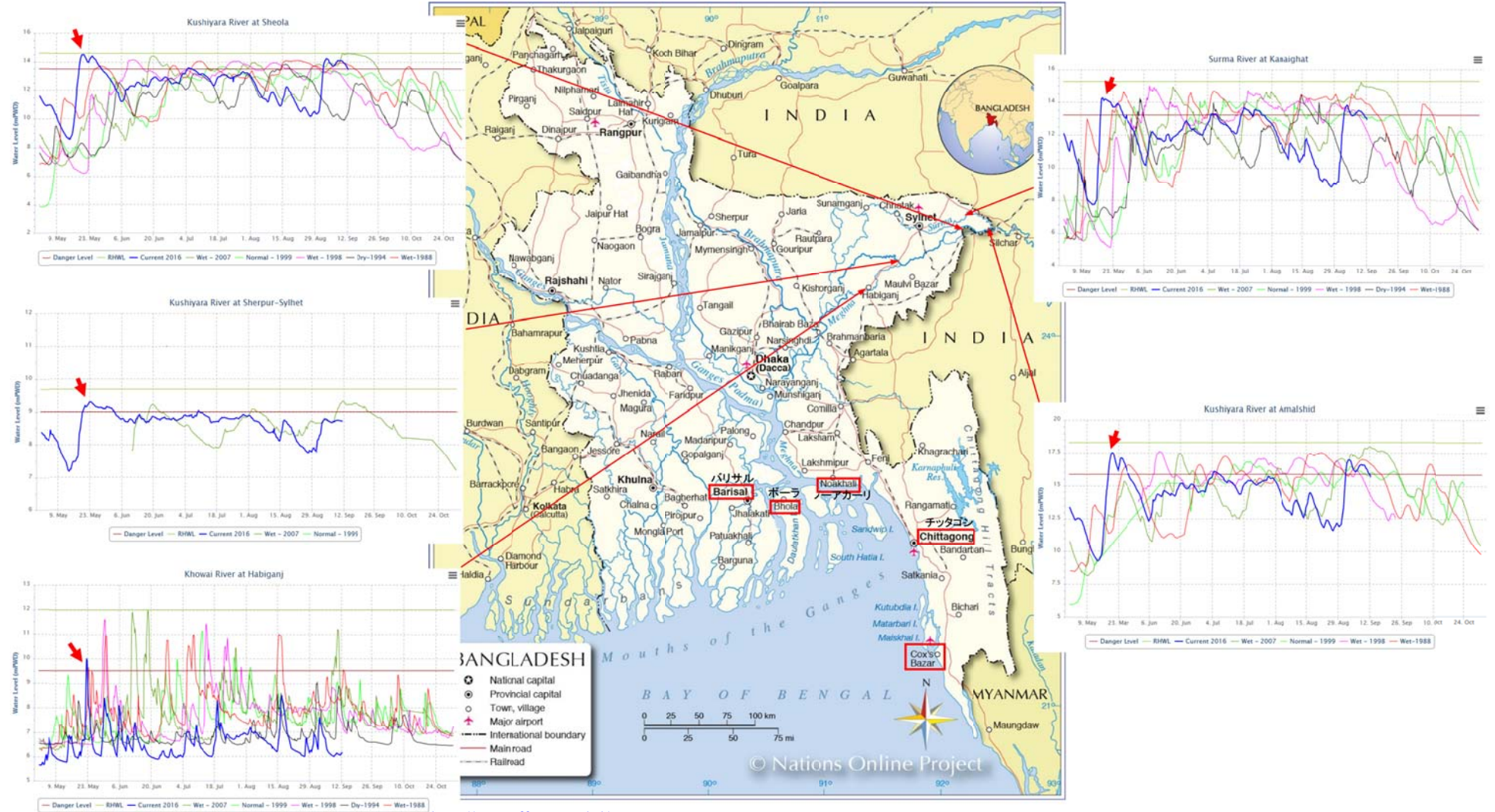


<Hydrograph of rivers in Bangladesh>

5 Monitoring Points that were above Danger Levels as of 9:00am May 22

Most Affected Districts:

Peak ↘



<http://www.ffwc.gov.bd/>

http://www.nationsonline.org/oneworld/map/bangladesh_map2.htm

Created by data from the following sources:

