

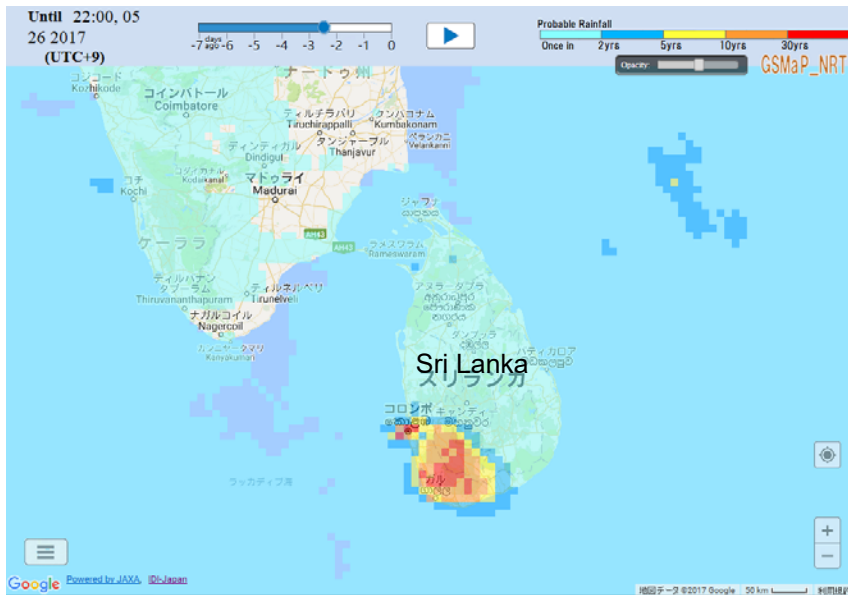
Sri Lanka FLOODS and LANDSLIDES

Country and Districts	Sri Lanka Nuwara Eliya, Trincomalee, Hambantota, Galle, Colombo, Kalutara, Gampaha, Batticaloa, Vavuniya, Mullaitivu, Matara, Ratnapura, Kegalle, Matale, Kandy	Death	213
Date of Occurrence	May 24, 2017	Missing	76
Outline	Heavy rain due to southwest monsoon affected 15 districts with widespread flooding and landslides.		

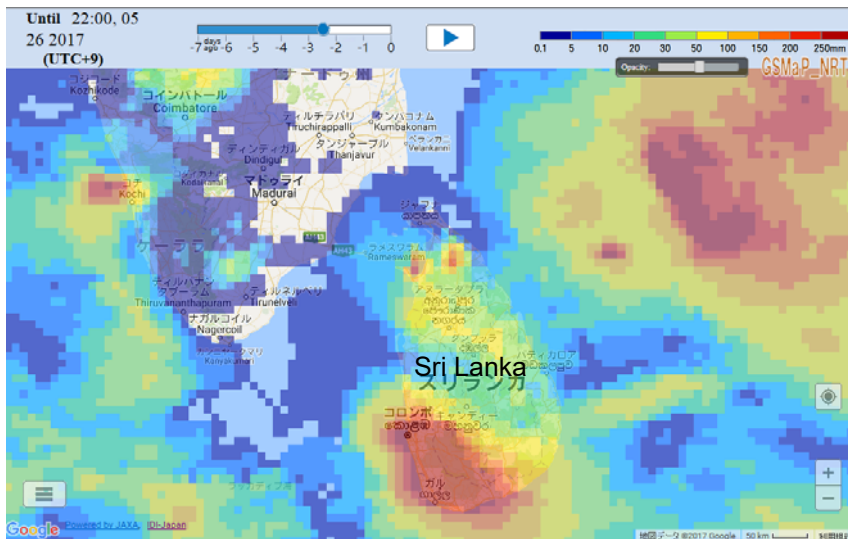
Precipitation Data from GFASII (Global Flood Alert System Ver.2)

GRASII is operated by Infrastructure Development Insutitute-Japan.

72 Hours Probable Rainfall (10:00pm, May 23 - 10:00pm, May 26 JST)



72Hours Accumulated Rainfall (10:00pm, May 23 - 10:00pm, May 26 JST)

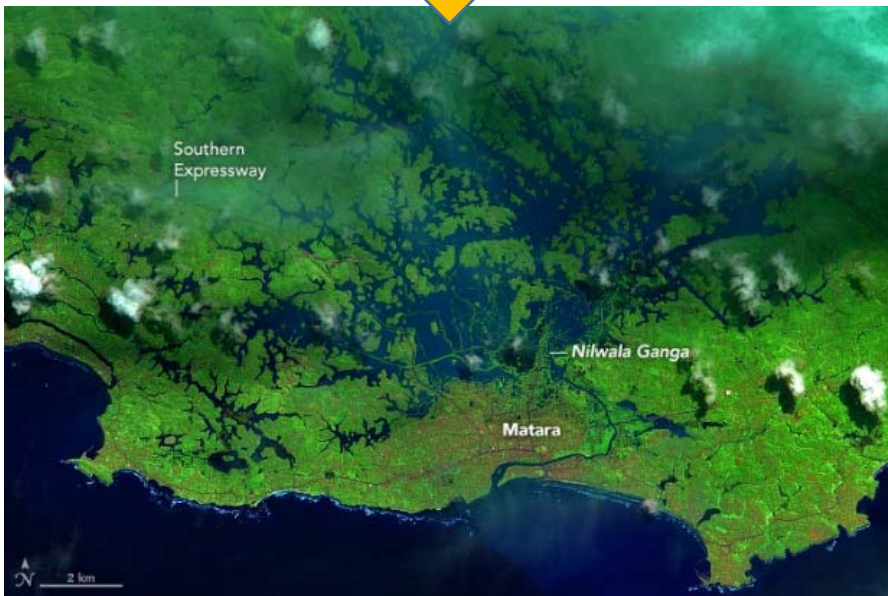


Inundated Areas near Nilwala River in Matara (NASA)

BEFORE (January, 2017)



AFTER (late May, 2017)



Source: <https://landsat.visibleearth.nasa.gov/view.php?id=90322>

