

# USA Louisiana: FLOOD

Country and Districts	Louisiana, USA	Death	13
	Acadia, Ascension, East Baton rouge, East Feliciana, Iberia, Lafayette, Livingston, Pointe Coupee, St. Helena, St. Landry, Tangipahoa, Vermilio, etc.		
Date of Occurrence	August 11, 2016	Missing	No data
Outline	A storm system dumped extreme rainfall, elevated multiple rivers, and resulted in severe flooding.		

## Photos



Port Vincent and Amite River  
August 14, 2016  
(NOAA)

Source: [http://www.nola.com/weather/index.ssf/2016/08/nasa\\_noaa\\_university\\_views\\_of.html](http://www.nola.com/weather/index.ssf/2016/08/nasa_noaa_university_views_of.html)



Amite River broke a record high level of 46.2 feet (14.1m)  
Denham Springs  
August, 14, 2016  
(Left: DigitalGlobe, Right: NOAA)

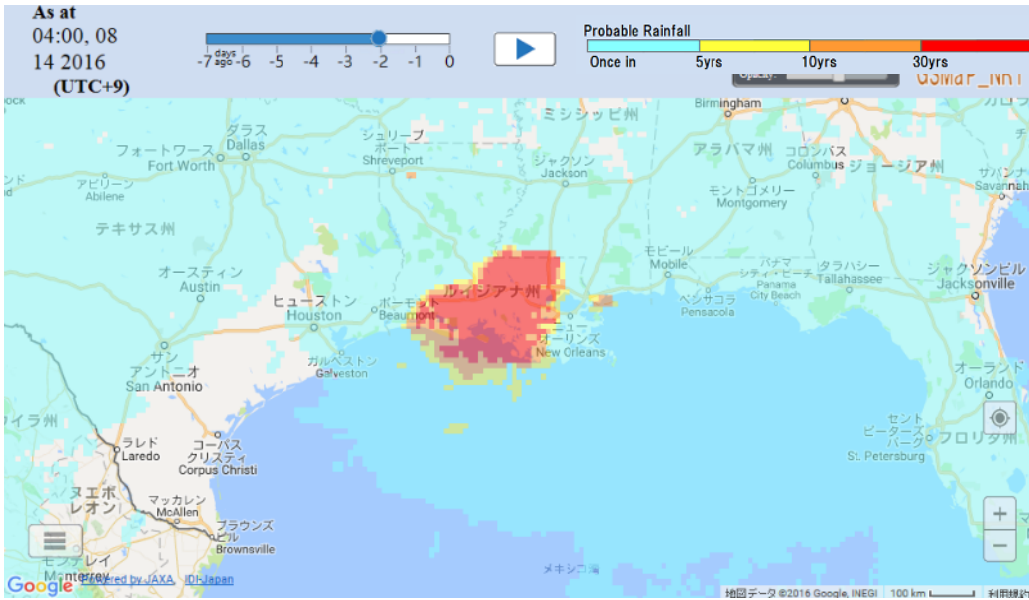
Source: <http://www.nytimes.com/interactive/2016/08/16/us/louisiana-flooding-pictures-maps.html>

## Charts and Maps

Precipitation Data acquired by satellite data analysis using **GFASII (Global Flood Alart System Ver.2)**

(GFASII is provided by Infrastructure Development Institute- Japan)

72 Hours Probable Rainfall (4:00am, August 11 - 4:00am, August 14 JST (Japan Standard Time))



72 Hours Accumulated Rainfall (1:00pm, August 12 - 1:00pm, August 15 JST (Japan Standard Time))

